

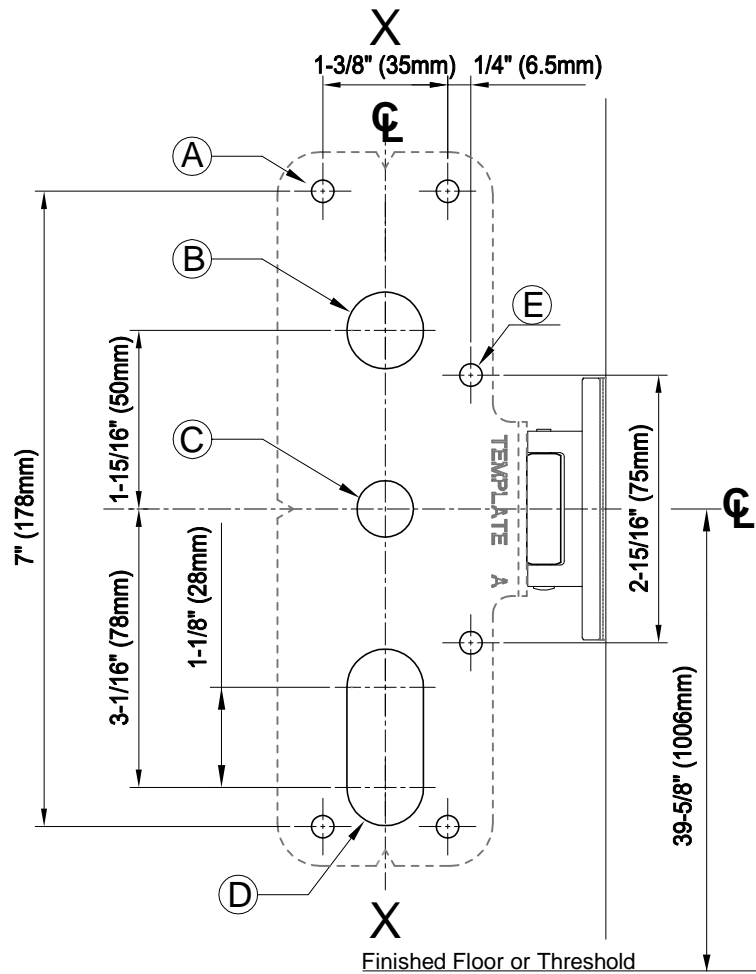
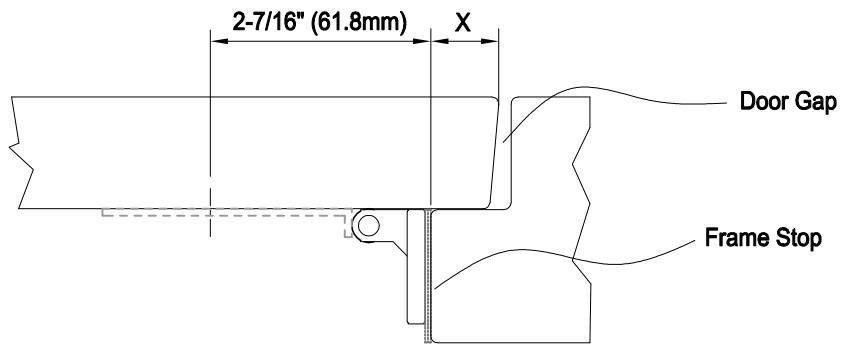
Template

Preparation for RIM/3PT with 106 Strike

Note:

As this is door prep. for single door, we can only provide you the distance (2-7/16" or 61.8mm) between device center line and the strike. Please note the distance marked as (X) needs to be determined by your end due to the distance (X) is the measurement of Frame stop minizes its door gap.

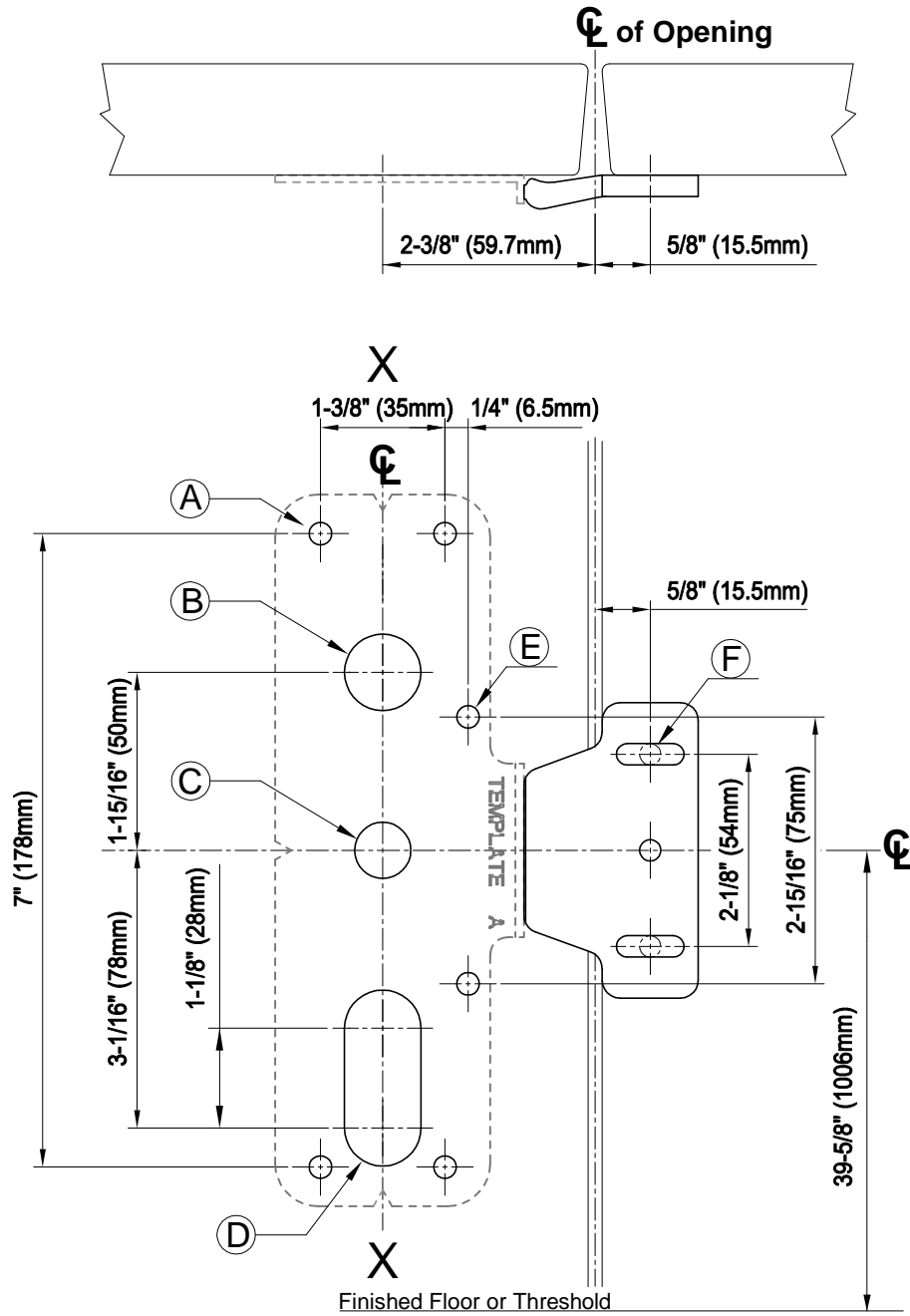
** Hence, the unknown factor is the its door gap and we don't know how your door installers are going to set up the doors with the unknown door gap.



NOTATION	ILL.	APPLICATIONS	DIMENSION	
			METAL	WOOD
A	○	EXIT ONLY	#25 DRILL	3 (1/8") DRILL
		SEX BOLT OR TRIM	#10-24 TAP	PILOT 1" DEEP
B	○	DOUBLE CYLINDER	6 (1/4") DRILL (DEVICE SIDE) 10.3 (13/32") DRILL (TRIM SIDE)	
C	○	OUTSIDE CYLINDER	22 (7/8") DRILL (CUT DEVICE SIDE)	16 (5/8") DRILL (CUT THRU)
D	⊂	TRIM WITH WORKING LEVER	22 (7/8") DRILL (CUT DEVICE SIDE ONLY)	
E	○	SUPPORT BRACKET	#25 DRILL	3 (1/8") DRILL
			#10-24 TAP	PILOT 1" DEEP

Template

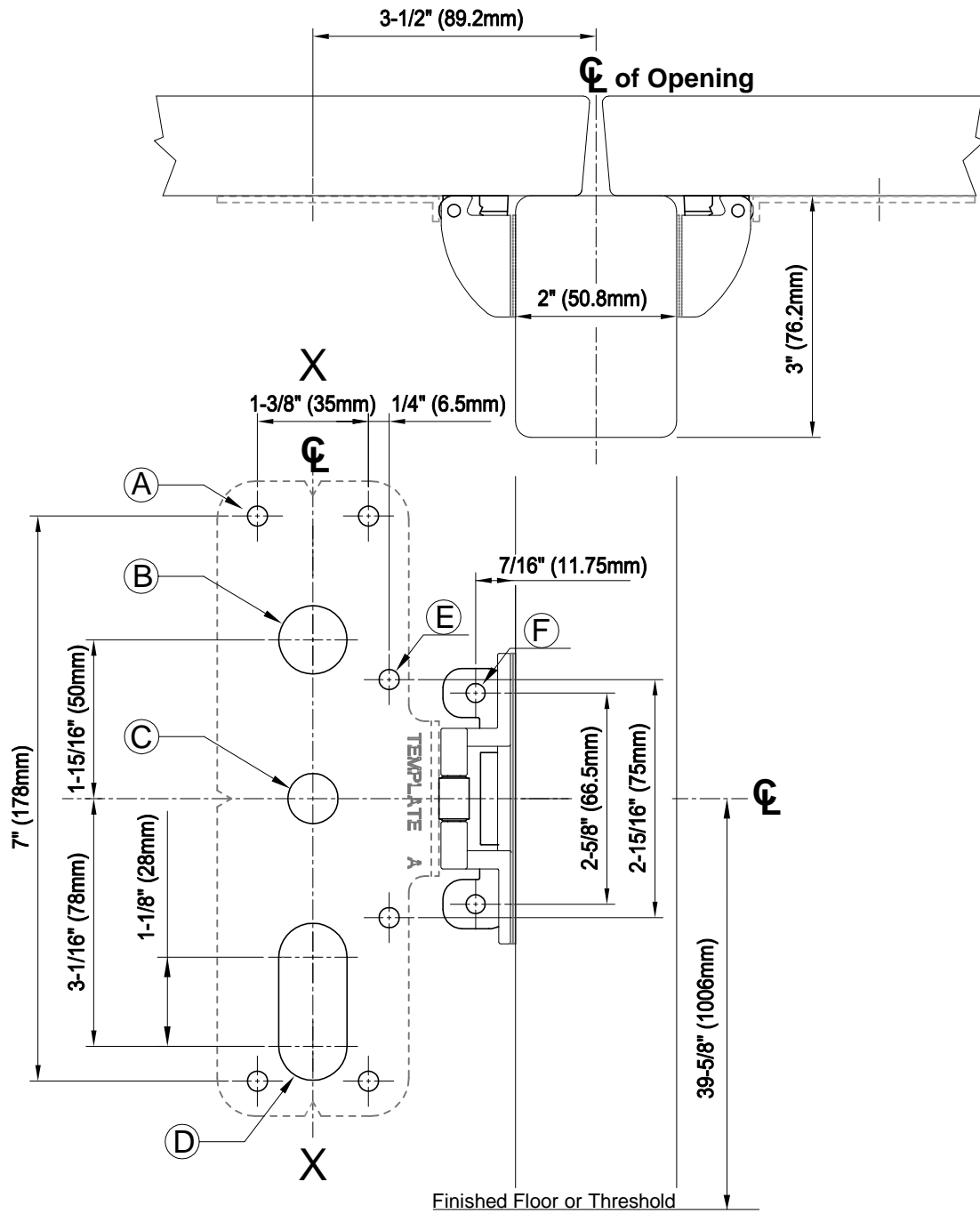
Preparation for RIM/3PT with 136 Strike



NOTATION	ILL.	APPLICATIONS	DIMENSION	
			METAL	WOOD
A	○	EXIT ONLY	#25 DRILL #10-24 TAP	3 (1/8") DRILL PILOT 1" DEEP
		SEX BOLT OR TRIM	6 (1/4") DRILL (DEVICE SIDE) 10.3 (13/32") DRILL (TRIM SIDE)	
B	○	DOUBLE CYLINDER	22 (7/8") DRILL (CUT THRU)	
C	○	OUTSIDE CYLINDER	16 (5/8") DRILL (CUT DEVICE SIDE)	16 (5/8") DRILL (CUT THRU)
D	⊂	TRIM WITH WORKING LEVER	22 (7/8") DRILL (CUT DEVICE SIDE ONLY)	
E	○	SUPPORT BRACKET	#25 DRILL #10-24 TAP	3 (1/8") DRILL PILOT 1" DEEP
F	○	136 STRIKE	#25 DRILL #10-24 TAP	3 (1/8") DRILL PILOT 1" DEEP

Template

Preparation for RIM/3PT with 108 Strike & Mullion



NOTATION	ILL.	APPLICATIONS	DIMENSION	
			METAL	WOOD
A	○	EXIT ONLY	#25 DRILL	3 (1/8") DRILL
		SEX BOLT OR TRIM	#10-24 TAP	PILOT 1" DEEP
B	○	DOUBLE CYLINDER	6 (1/4") DRILL (DEVICE SIDE) 10.3 (13/32") DRILL (TRIM SIDE)	
C	○	OUTSIDE CYLINDER	22 (7/8") DRILL (CUT THRU)	
D	⊖	TRIM WITH WORKING LEVER	16 (5/8") DRILL (CUT DEVICE SIDE)	16 (5/8") DRILL (CUT THRU)
E	○	SUPPORT BRACKET	22 (7/8") DRILL (CUT DEVICE SIDE ONLY)	
F	○	108 STRIKE	#25 DRILL	3 (1/8") DRILL
			#10-24 TAP	PILOT 1" DEEP
			#25 DRILL	3 (1/8") DRILL
			#10-24 TAP	PILOT 1" DEEP