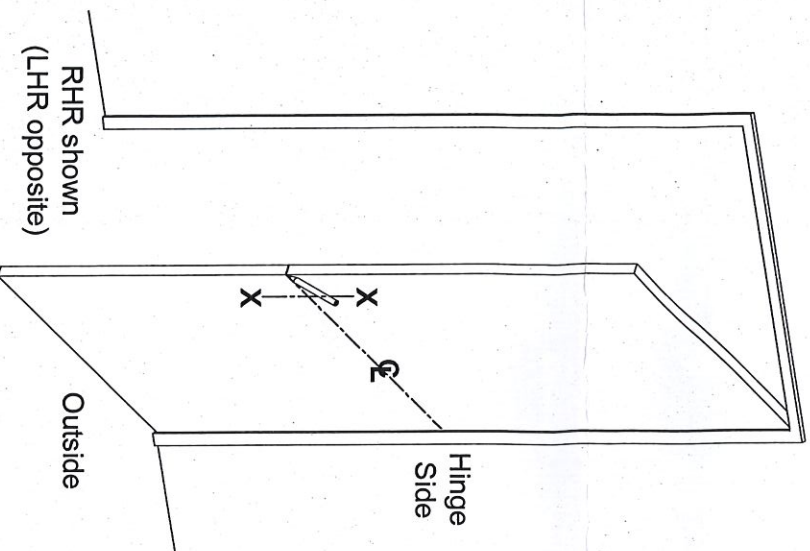
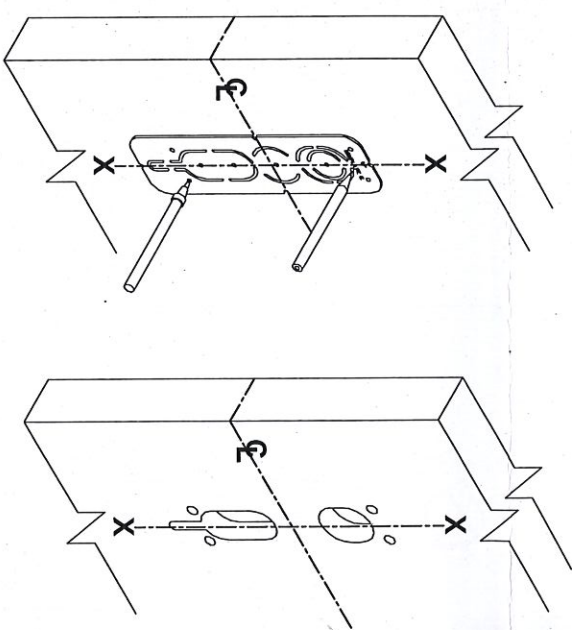


300 SERIES ESCUTCHEON TRIM FOR EXIT DEVICE (CLUTCH VERSION)

INSTALLATION INSTRUCTIONS

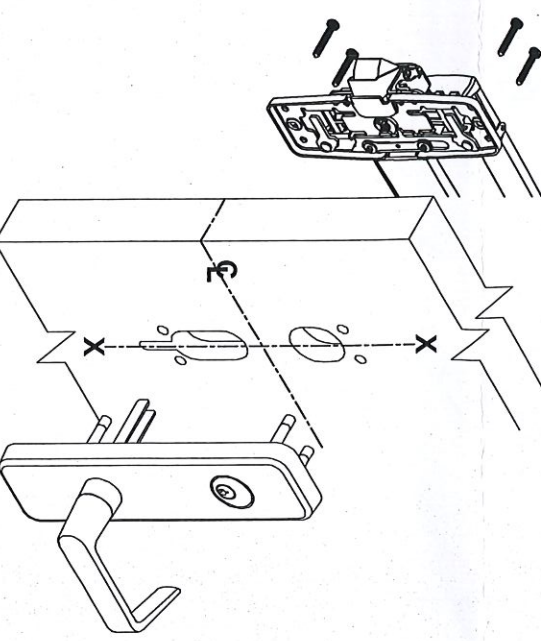


1. Prepare door for exit device. See exit device instructions for holes, backset (line X-X), and center lines.
2. Transfer line X-X from inner (exit device) side of door to outer (trim side) of door. Be extra careful if edge of door is beveled. Be sure line X-X is parallel to edge of door.



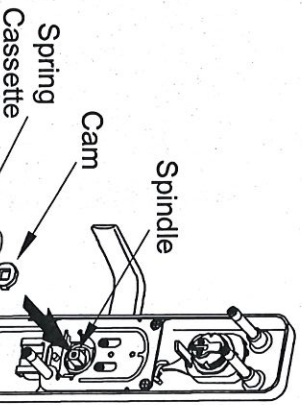
3. Locate X-X line and prepare required holes with "Template C".

NOTE: See "TEMPLATE APPLICATION CHART" on back page for different trim functions.

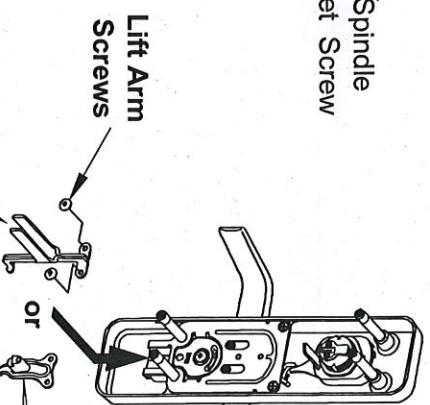


4. Select trim function, trim handing and assemble trim as needed. (see "HOW TO ASSEMBLE TRIM" and "INSTALL CYLINDER" on back of this page)

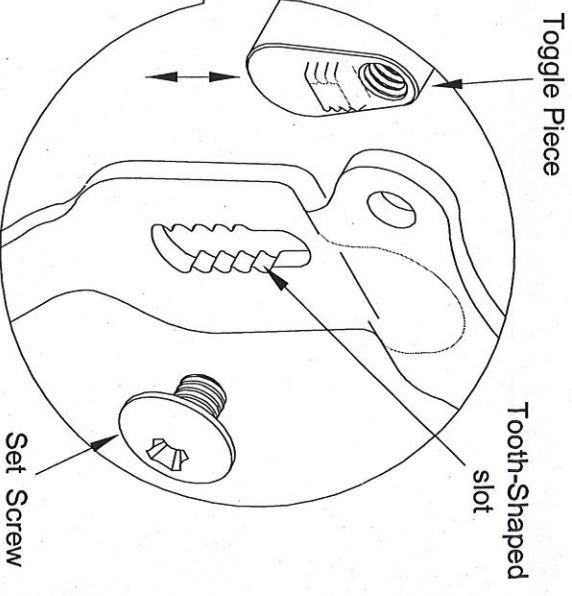
HOW TO ASSEMBLE TRIM



1. Choose lever handing. (RHR shown; LHR opposite)
2. Insert cam on spindle.
3. Insert spring cassette and make sure the direction of spring cassette matches with lever handing.
4. Rotate lever to check function, tighten spindle set screw.

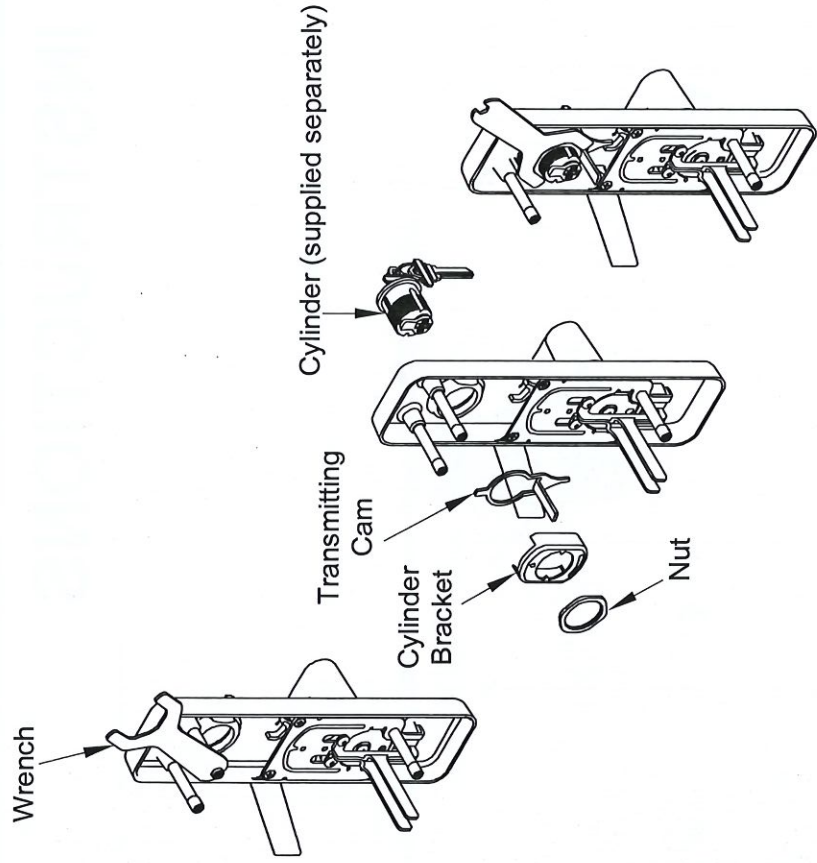


5. Install lift arm by fitting tabs into guide under mechanism.
6. Assemble lift arm onto moving parts of the mechanism with set screws.



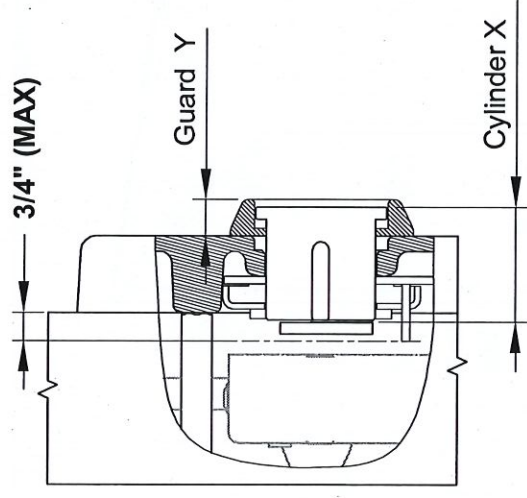
NOTE:
The lift arm for mortise lock exit device function is capable of fine adjustments. When the turning of the handle cannot completely retract the latch, it is necessary to adjust the slider. To do so, remove the central screw and move the toggle piece upwards or downwards depending on the situation. When finished fasten with set screw and test for normal actuation of handle and latch.

INSTALL CYLINDER



1. Use the wrench provided to unscrew the thrubolt.
2. Install cylinder, transmitting cam, cylinder bracket and nut.
3. Secure nut tightly with wrench and re-install thrubolt.

SPECIAL ARRANGEMENT FOR USAGE WITH 1300 OR 1400 EXIT DEVICES



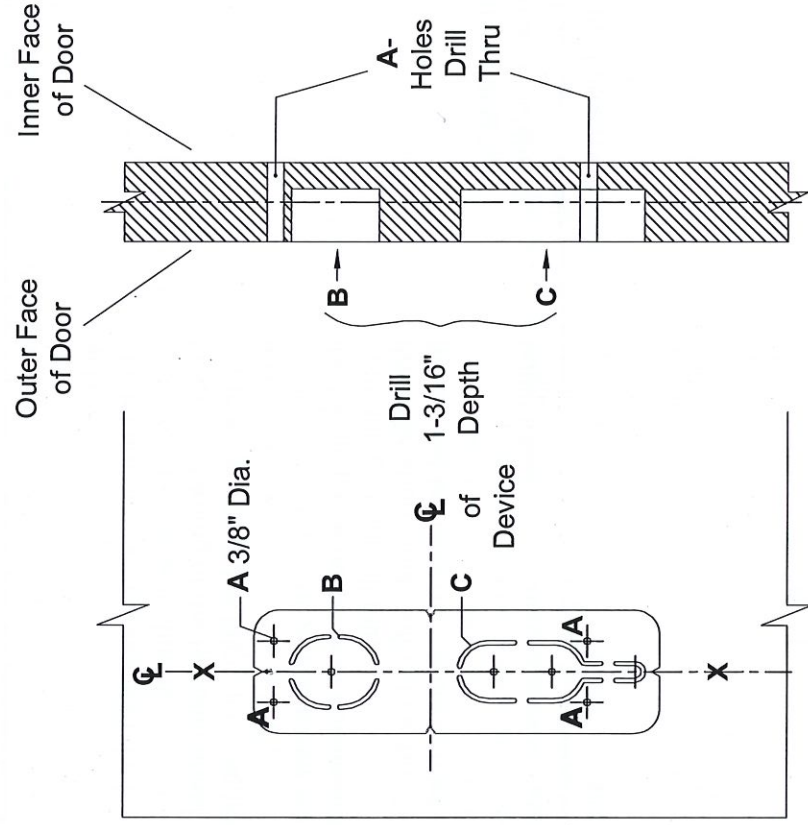
When trim is used for 1300 or 1400 exit devices, the cylinder must be installed along with the cylinder guard to prevent interference between the core and the cylinder during actuation. After installation, the projection measured from the trim's most inner part must not be greater than 3/4".

The following table shows the recommended dimension arrangements.

	Cylinder No.	X	Guard No.	Y
Standard Cylinder	441-102	1-1/8"	4240-0202	3/8"
I/C Cylinder	442-701	1-3/8"	611902-032	1/2"

DOOR PREPARATION FOR CLUTCH TRIM

FOR RIM AND VERTICAL ROD DEVICE



FOR MORTISE LOCK

