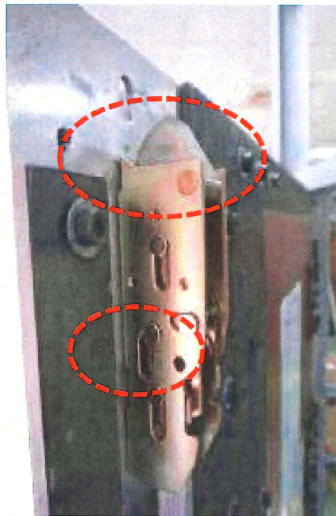


Installing the Rods on the Q1200

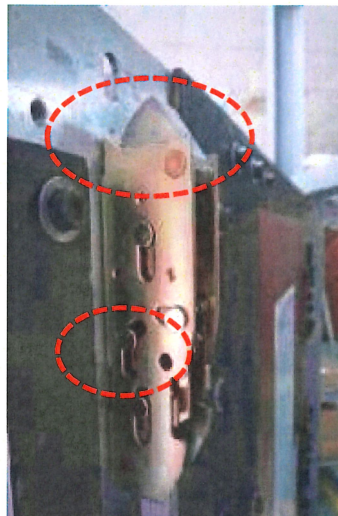


(I) Attaching the rod to the latch assembly



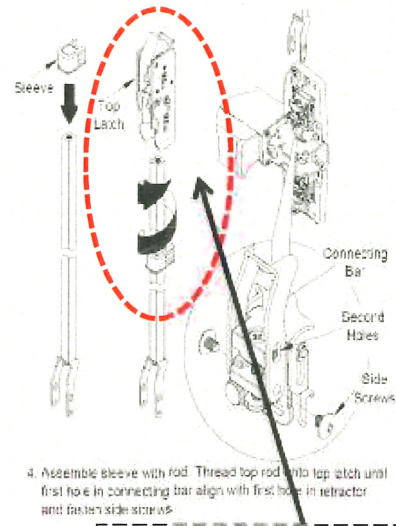
OK

Latchbolt is fully extended.
The pin is at the anchor point.



NG

Latchbolt is NOT fully extended.
The pin is NOT at the anchor point.



Do **NOT** thread in too much. The pin should stay at the anchor point after connecting the other side of the rod to the slider.

(II) Connecting the other side of the rod to the slider

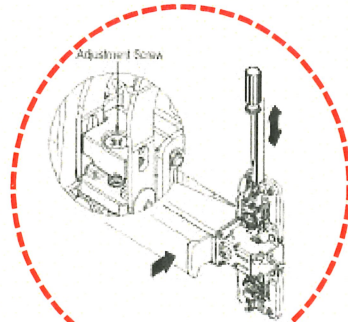
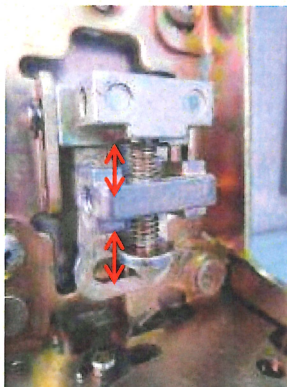


Position the first (lower) hole on the slider to the first (lower) hole on the connecting bar.

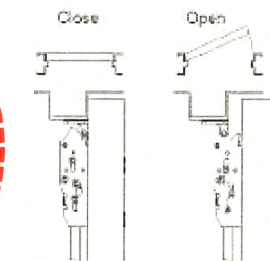


Secure the connecting bar to the slider with two side screws.

(II) Adjusting the rod's length from the slider



1. Push down push bar will retract the latchbolt to open. The latchbolt will stay retracted and the bar is in HOLDBACK. If NO DEADLOCK, adjust screw in top of retractor by screw driver.



2. Fully extended latchbolt should be in DEADLOCK. DEADLOCKED latchbolt cannot be pushed down into the latch. If NO DEADLOCK, loose slide screws and adjust slide position.

Slightly adjust the position of the rod **FROM THE SLIDER** ONLY, until making sure the deadlocking is functioning. Do **NOT** further thread in the rod into the latchbolt as it may stress the pin off the anchor point.

(IV) Do the same steps for the other (bottom) rod.