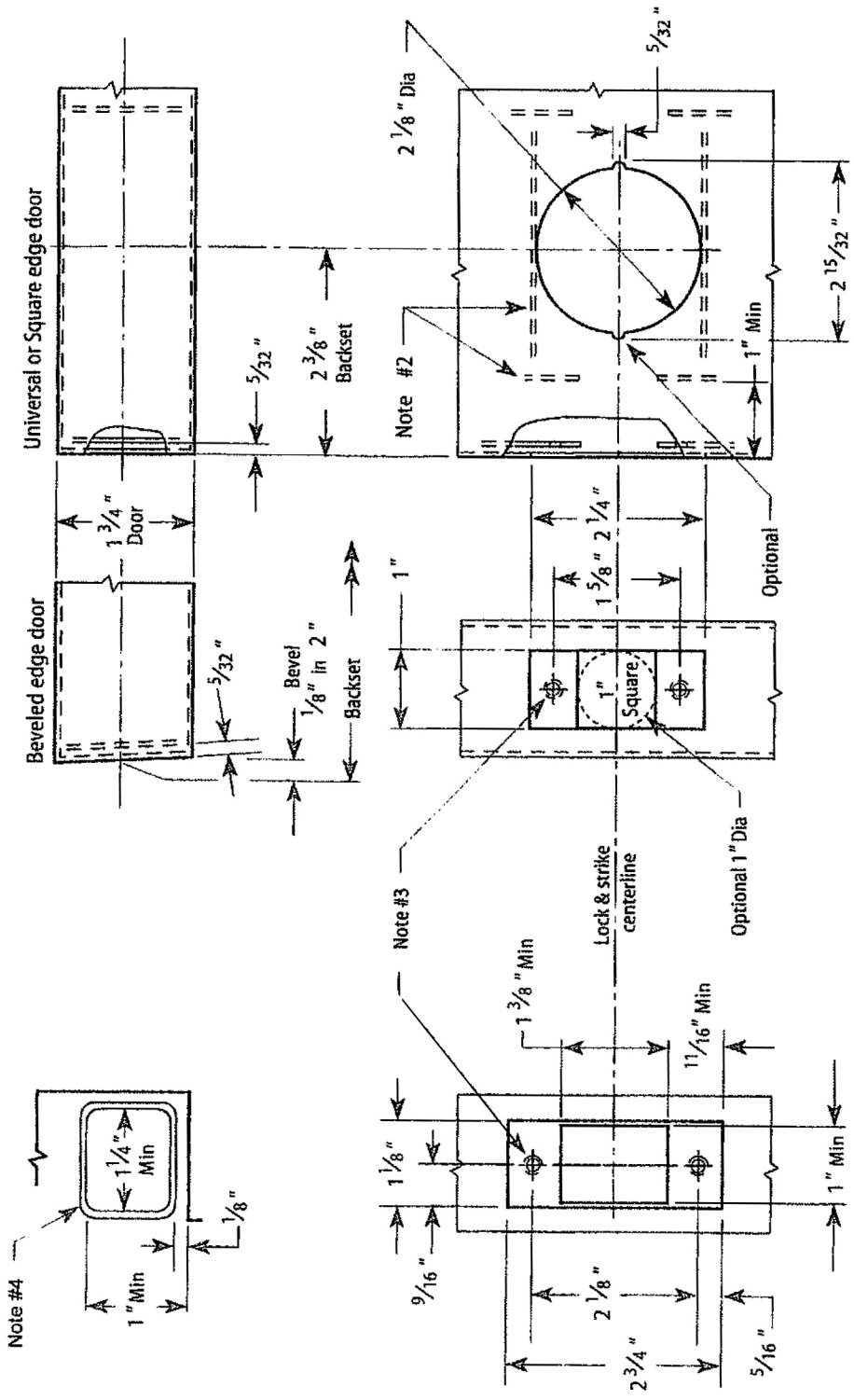



- Notes**
1. Allow plus tolerance for clearance per ANSI A115.2.
  2. Lock and latch case support by door manufacturer.
  3. Prepare for a #8-32 screw.
  4. Plaster guard by door manufacturer.



2 3/8" Backset Door Preparation

Frame Preparation

<b>Title</b> Installation Specification Template for MBT & MBT2 Tubular Deadbolt Locks with Standard Strike		
<b>Series:</b> MBT & MBT2	<b>Backset:</b> 2 3/8"	