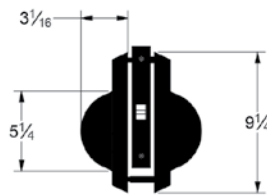
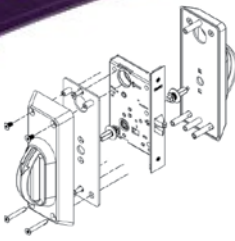


Life Safety



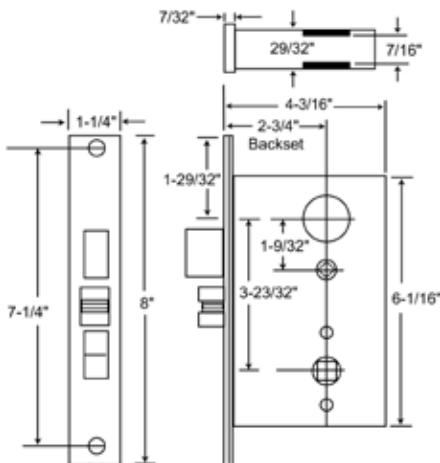
## FUNCTIONS

SERIES MB5BH			
COMM. CYL.	ACCEPTS SFIC CORE CYL.	DESCRIPTION	ANSI #
KEYED SINGLE CYLINDER, NO DEADBOLT			
DW	RDW	VESTIBULE	
EW	REW	STOREROOM	F07
J	RJ	CLASSROOM	F05
GL	RGL	INSTIT. PRIVACY	F26
EL	REL	ELECTRICALLY LOCKED	
EU	REU	ELECTRICALLY UNLOCKED	
KEYED DOUBLE CYLINDER, NO DEADBOLT			
GC	RGC	INTRUDER LATCHBOLT	F32
GG	RGG	CLASSROOM SECURITY	
WW	RWW	INSTITUTIONAL	F30
KEYLESS			
N	—	PASSAGE	F01
LJ	—	PRIVACY	F22
DUMMY TRIM			
DI	—	DUMMY TRIM INSIDE	F08, F10
DO	—	DUMMY TRIM OUTSIDE	F21
DT	—	FULL DUMMY	F12

# Grade 1 MB5BH Series D-Lig Slide Mortise Locksets

## FEATURES:

- **Rating:** ANSI A 156.2 Grade 1, UL Listed 3Hr Fire Rating
- 5-Point Ligature Resistant Slide Trim
- **Backset:** 2 3/4" Standard, 2 3/8", 3 3/4" and 5" available
- Latch: #1834, Stainless Steel Nose
- Ergonomic Solid Cast Stainless Steel Slide: Slides down freely in the locked or unlocked position
- Escutcheon Plate Solid Cast Stainless Steel: thru bolted for strength and easy installation
- Designed to meet BHMA 156.34 Anti-Ligature Trim Standard
- Tamper Resistant Mounting Screws
- Strike: #1135, 4 7/8" ASA Curved Lip Strike
- Door Thickness: 1-3/4"
- Cylinder: SFIC standard, Standard Cylinder available in C Keyway, 6 pin w/1 key and All OEM cylinder preps
- MBS Stainless Steel Retractor: Long life 3X the BHMA Grade 1 Cycle Standard
- Antimicrobial Finish available – Code AM
- MBS Lifetime Mechanical Warranty
- Available in Most BHMA ANSI Functions



## How To Order

Model Series	Function Code	Finish	*Options
MB5BH	RJ	630	G1
MB5BH	See Function	630	AM Anti-Microbial *See Option Codes on p.3

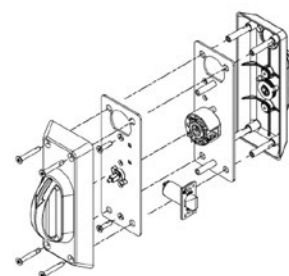
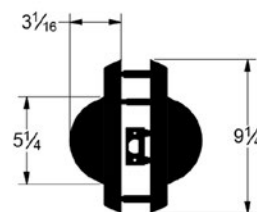
# Grade 1

## MB195BH D-Lig

### Slide Cylindrical

#### FEATURES:

- **Rating:** ANSI A156.13 Grade 1, UL Listed 3Hr Fire Rating
- 5-Point Ligature Resistant Slide Trim
- **Backset:** 2 3/4" Standard, 2 1/2" consult Factory
- Latch: #1834, Stainless Steel Nose
- Ergonomic Solid Cast Stainless Steel Slide:  
Slides down freely in the locked or unlocked position
- Escutcheon Plate Solid Cast Stainless Steel:  
thru bolted for strength and easy installation
- Designed to meet BHMA 156.34 Anti-Ligature Trim Standard
- Tamper Resistant Mounting Screws
- Strike: #1135, 4 7/8" ASA Curved Lip Strike
- Door Thickness: 1-3/4"
- Cylinder: SFIC standard, Standard Cylinder available in C Keyway, 6 pin w/1 key and All OEM cylinder preps
- MBS Stainless Steel Retractor:  
Long life 3X the BHMA Grade 1 Cycle Standard
- Antimicrobial Finish available – Code AM
- MBS Lifetime Mechanical Warranty
- Available in Most BHMA ANSI Functions



#### How To Order

Model Series	Function Code	Finish	*Options
MB195BH	RF	630	G1
MB195BH	See Function	630	AM Anti-Microbial *See Option Codes on p.3

#### FUNCTIONS

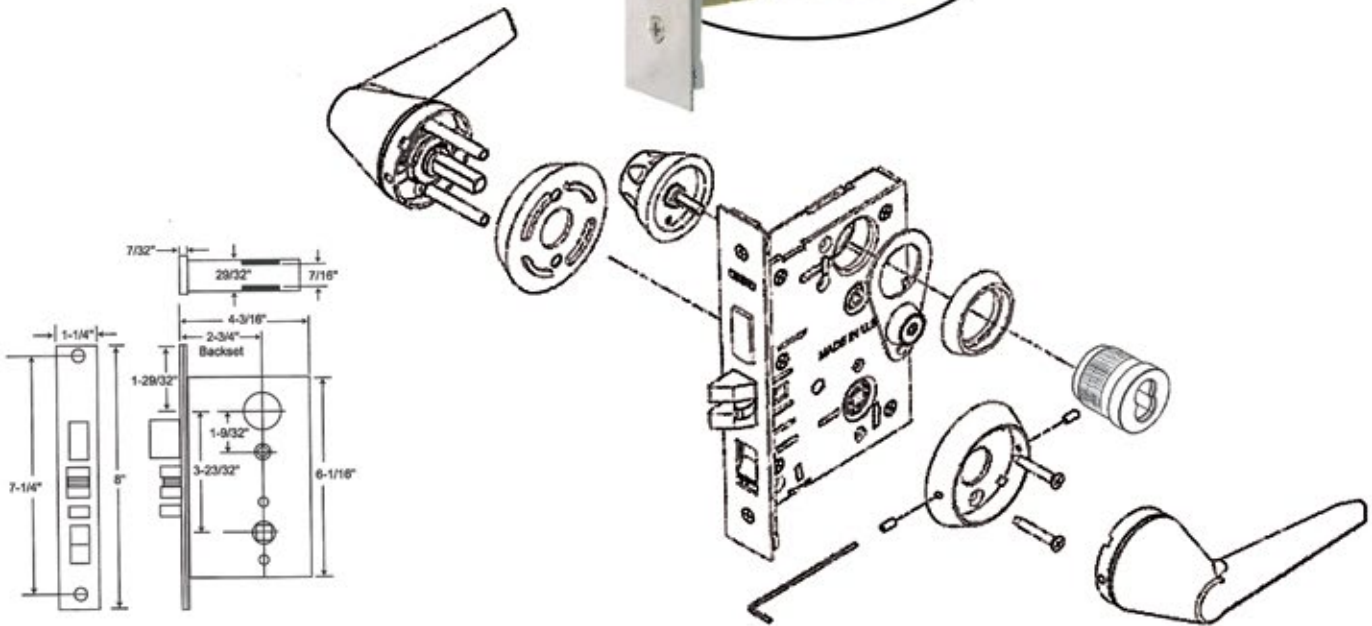
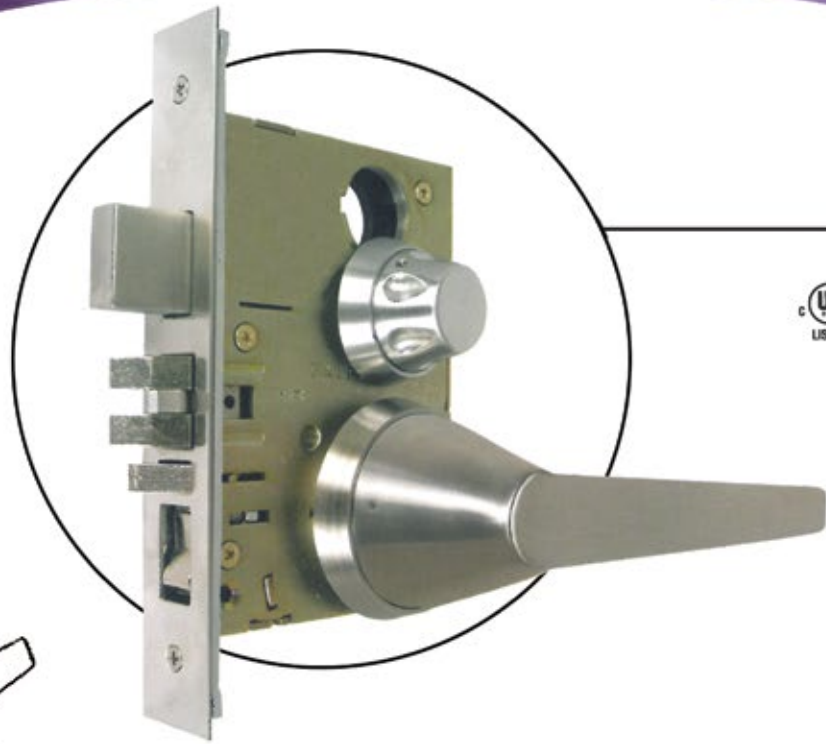
COMM. CYL.	ACCEPTS SFIC CORE CYL.	DESCRIPTION	ANSI #
N	—	PASSAGE	F75
L	—	PRIVACY	F76
B	RB	ENTRY	F82A
S	RS	CLASSROOM	F84
F	RF	STOREROOM	F86
DW	RDW	INSTITUTION	F87
DB	RDB	CLASSROOM INTRUDER	F110
DO	—	DUMMY TRIM OUTSIDE	—
DT	—	FULL DUMMY TRIM	—
NB	—	COMM. PASSAGE	F111
FB	RFB	COMM. STOREROOM	F112
SB	RSB	COMM. CLASSROOM	F113
FEL	RFEL	ELECTRICALLY LOCKED	
FEU	RFEU	ELECTRICALLY UNLOCKED	

OPTIONS	CODE
For 2" doors	D1
For 2-1/4" doors, <b>Consult Factory</b>	D2
Over 2-1/4" - 4" thickness	D9
2-3/8" backset, 1" x 2-1/4" face	E6
5" backset, 9/16" throw, Gr. 1	E9
3-3/4" backset, 9/16" throw, Gr. 1	E10
2-3/4" "T" strike	S3
Sargent conventional cylinder	F8
Corbin conventional cylinder	F9
Corbin 6 pin IC core	F12
Yale 6 pin IC core	F14
Sargent IC core	F20
Medeco IC core large format	F21
Schlage Large Format IC Core	F19
7-Pin Yale IC Core	F15
Best Style Small Format IC Core	G1
Less cylinder	G3





# MB5SS19 Series Institutional Life Safety Mortise Locksets – Levers



## FEATURES:

### Performance Specifications:

Life Test: 1,500,000 cycles minimum.

ANSI Test: Meets or exceeds all operational and security tests of ANSI specifications A156.13-2005 for series 5000, Grade 1.

### Trim Specifications:

Exterior & Interior Trim:

- Solid stainless steel interior and exterior tapered levers recessed into thru-bolted roses.
- Ergonomically designed grooved turn knob for deadbolt functions.

Cylinder: Solid stainless steel cylinders with solid stainless steel security collars, Accepts 6 or 7 pin Small Format Interchangeable Cores

Strike: 4-7/8" curved lip stainless steel w/tamperproof screws

Door Thickness: 1-3/4" standard; Extended range available

Door Prep: ANSI A115.1 lock face cutout, with 2-1/8" through hole for lever/rose assembly

Lock Front: Adjustable bevel steel backplate 1-1/4" x 8" x 7/64" thick, Cover plate 1/16" thick with tamper proof screws

Latch: Solid stainless steel with antifriction latch lever, 3/4" throw (reversible)

Levers: Solid cast stainless steel. *Levers rotate up & down freely in locked or unlocked position*

Aux. Deadlatch: 1/2" throw, (reversible)

Case: Stamped steel 3/32" thick, zinc dichromate finish

Hubs: Steel, 9/32" on diamond, 5/16" on square w/security separator

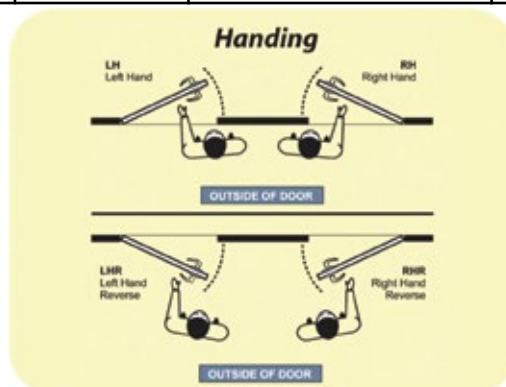
Hub Lock Arm: (to lock hub) Steel 1/8" thick

Spindles: Independent spring-loaded spindles

## FUNCTIONS

COMM. CYL.	ACCEPTS SFIC CORE CYL.	DESCRIPTION	ANSI #
<b>KEYED SINGLE CYLINDER, NO DEADBOLT</b>			
D	RD	OFFICE VEST.	
DW	RDW	VESTIBULE	
E	RE	OFFICE	F04
EW	REW	STOREROOM	F07
J	RJ	CLASSROOM	F05
JM, JR	RJM, RJR	HOSPITAL	F06
GL	RGL	INSTITUTIONAL PRIVACY	F26
EL	REL	ELECTRICALLY LOCKED	
EU	REU	ELECTRICALLY UNLOCKED	
<b>KEYED SINGLE CYLINDER, WITH DEADBOLT</b>			
A	RA	ENTRANCE	F08, F10
B	RB	ENTRANCE	F21
F	RF	DORMITORY	F12
FS	RFS	DORMITORY	
FW	RFW	DORMITORY	F13
<b>KEYED DOUBLE CYLINDER, NO DEADBOLT</b>			
G	RG	APARTMENT	F09
GC	RGC	INTRUDER LATCHBOLT	F32
GR	RGR	CLASSROOM SECURITY W/HOLDBACK	
GG	RGG	CLASSROOM SECURITY	
WW	RWW	INSTITUTIONAL	F30

COMM. CYL.	ACCEPTS SFIC CORE CYL.	DESCRIPTION	ANSI #
<b>KEYED DOUBLE CYLINDER, WITH DEADBOLT</b>			
AC	RAC	ENTRANCE	F35
C	RC	STOREROOM	F14
FA	RFA	DORMITORY	F11
FC	RFC	INTRUDER DEADBOLT	F34
FX	RFX	DORMITORY	F33
<b>KEYLESS</b>			
N	—	PASSAGE	F01
L	—	BATHROOM	F02
LF	—	PRIVACY	F19
LJ	—	PRIVACY	F22
EX	—	EXIT	F31
<b>DUMMY TRIM</b>			
DI	—	DUMMY TRIM INSIDE	
DO	—	DUMMY TRIM OUTSIDE	
DT	—	FULLY DUMMY	



### How To Order

Model Series	Backset	Function Code	Finish	Hand	*Options
MB5SS19	3	RA	630	RH	G1
MB5SS19	2 – 2 1/2" 3 – 2 3/4" standard	See Function Chart	630	RH - Right Hand LH - Left Hand RHR - Right Hand Reverse LHR - Left Hand Reverse	A17 AM Anti-Microbial Coating *See Option Codes on pg.3

Quick Privacy Access A9618-1;  
Option Code A17

#### Function "LJ" F22:

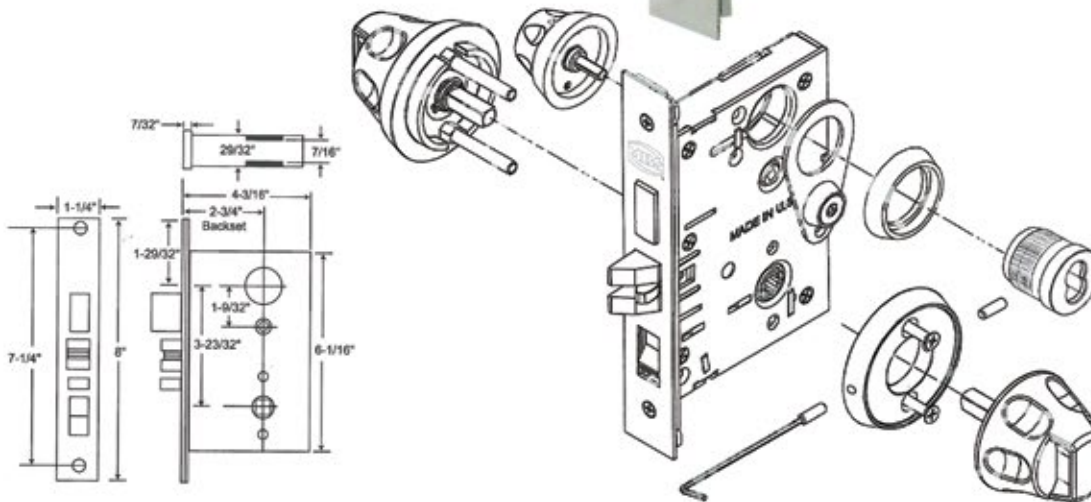
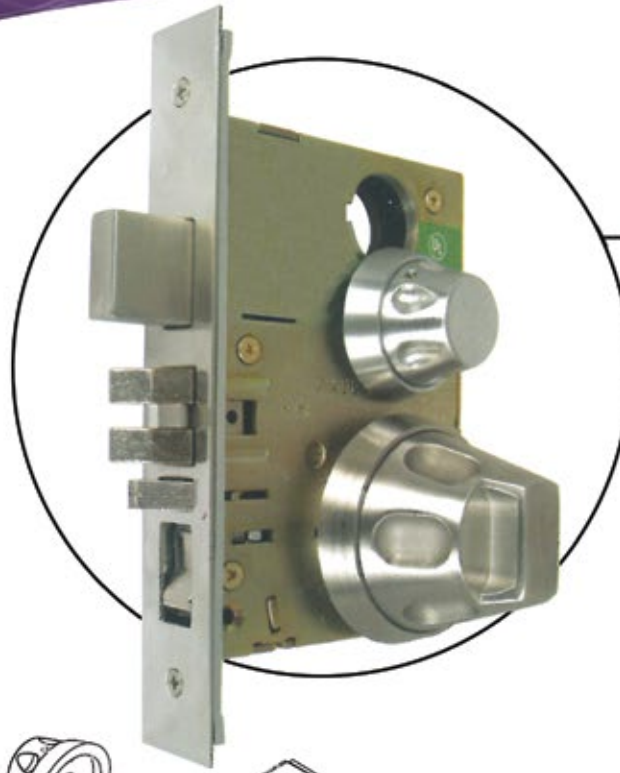
ANSI F22 Latch by lever either side except when outside lever is locked by inside turnpiece. Turning inside lever or closing door unlocks outside lever. To unlock from outside, remove emergency button, insert emergency key in access hole and turn. Optional coin key assembly available.



**I/C core throw members ARE included.**



# MB5SS55 Series Institutional Life Safety Mortise Locksets – Knobs



## FEATURES:

### Performance Specifications:

Life Test: 1,500,000 cycles minimum.

ANSI Test: Meets or exceeds all operational and security tests of ANSI specifications A156.13-2005 for series 5000, Grade 1.

### Trim Specifications:

Exterior & Interior Trim:

- Solid stainless steel interior and exterior tapered knobs recessed into thru-bolted roses.
- Safety knobs with recessed grip and finger indents. Safety lever for handicapped access on clutch operated Mortise lock.
- Ergonomically designed grooved turn knob for deadbolt functions.

Cylinder: Solid stainless steel cylinders with solid stainless steel security collars, Accepts 6 or 7 pin Small Format Interchangeable Cores

Strike: 4-7/8" curved lip stainless steel w/tamperproof screws

Door Thickness: 1-3/4" standard; Extended range available

Door Prep: ANSI A115.1 lock face cutout, with 2-1/8" through hole for knob/rose assembly

Lock Front: Adjustable bevel steel backplate 1-1/4" x 8" x 7/64" thick, Cover plate 1/16" thick with tamper proof screws

Latch: Solid stainless steel with antifriction latch lever, 3/4" throw (reversible)

Knobs: Solid cast stainless steel. *Knobs rotate freely in locked or unlocked position*

Aux. Deadlatch: 1/2" throw, (reversible)

Case: Stamped steel 3/32" thick, zinc dichromate finish

Hubs: Steel, 9/32" on diamond, 5/16" on square w/security separator

Hub Lock Arm: (to lock hub) Steel 1/8" thick

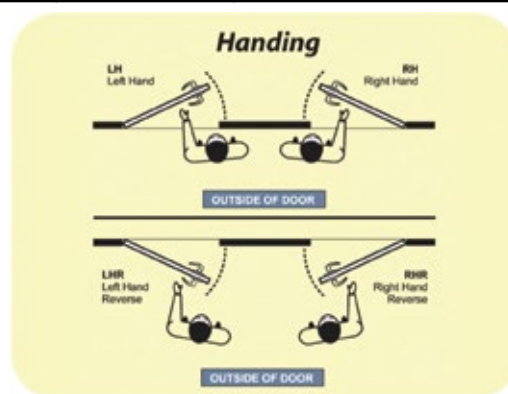
Spindles: Independent spring-loaded spindles



## FUNCTIONS

COMM. CYL.	ACCEPTS SFIC CORE CYL.	DESCRIPTION	ANSI #
<b>KEYED SINGLE CYLINDER, NO DEADBOLT</b>			
D	RD	OFFICE VEST.	
DW	RDW	VESTIBULE	
E	RE	OFFICE	F04
EW	REW	STOREROOM	F07
J	RJ	CLASSROOM	F05
JM, JR	RJM, RJR	HOSPITAL	F06
GL	RGL	INSTITUTIONAL PRIVACY	F26
EL	REL	ELECTRICALLY LOCKED	
EU	REU	ELECTRICALLY UNLOCKED	
<b>KEYED SINGLE CYLINDER, WITH DEADBOLT</b>			
A	RA	ENTRANCE	F08, F10
B	RB	ENTRANCE	F21
F	RF	DORMITORY	F12
FS	RFS	DORMITORY	
FW	RFW	DORMITORY	F13
<b>KEYED DOUBLE CYLINDER, NO DEADBOLT</b>			
G	RG	APARTMENT	F09
GC	RGC	INTRUDER LATCHBOLT	F32
GR	RGR	CLASSROOM SECURITY W/HOLDBACK	
GG	RGG	CLASSROOM SECURITY	
WW	RWW	INSTITUTIONAL	F30

COMM. CYL.	ACCEPTS SFIC CORE CYL.	DESCRIPTION	ANSI #
<b>KEYED DOUBLE CYLINDER, WITH DEADBOLT</b>			
AC	RAC	ENTRANCE	F35
C	RC	STOREROOM	F14
FA	RAF	DORMITORY	F11
FC	RFC	INTRUDER DEADBOLT	F34
FX	RFX	DORMITORY	F33
<b>KEYLESS</b>			
N	RN	PASSAGE	F01
L	RL	BATHROOM	F02
LF	RLF	PRIVACY	F19
LJ	RLJ	PRIVACY	F22
EX	REX	EXIT	F31
<b>DUMMY TRIM</b>			
DI	RDI	DUMMY TRIM INSIDE	
DO	RDO	DUMMY TRIM OUTSIDE	
DT	RDT	FULLY DUMMY	



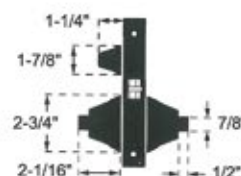
### How To Order

Model Series	Backset	Function Code	Finish	Hand	*Options
MB5SS55	3	RA	630	RH	G1
MB5SS55	2 - 2 1/2" 3 - 2 3/4" standard	See Function Chart	630	RH - Right Hand LH - Left Hand RHR - Right Hand Reverse LHR - Left Hand Reverse	A17 AM Anti-Microbial Coating *See Option Codes on pg.3

Quick Privacy Access A9618-1;  
Option Code A17

#### Function "LJ" F22:

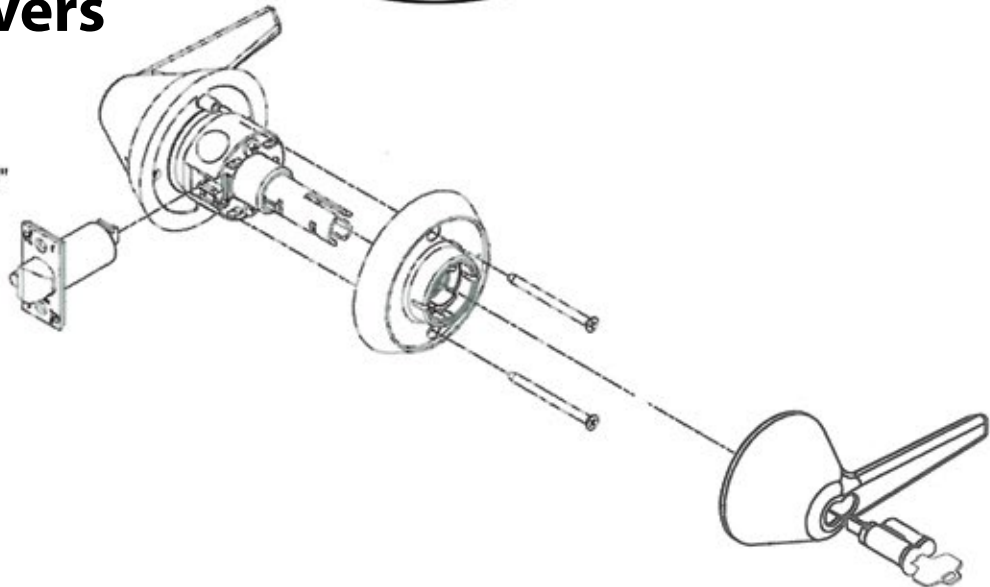
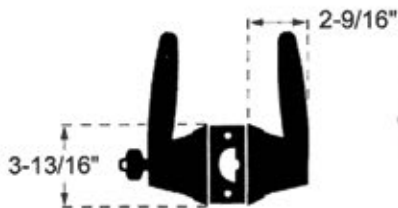
ANSI F22 Latch by knob either side except when outside knob is locked by inside turnpiece. Turning inside knob or closing door unlocks outside knob. To unlock from outside, remove emergency button, insert emergency key in access hole and turn. Optional coin key assembly available.



**I/C core throw members ARE included.**



# MB195SS Series Institutional Life Safety Cylindrical Locksets – Levers



## FEATURES:

### Performance:

- Life Test: 1,500,000 cycles minimum
- ANSI Test: Meets or exceeds all operational and security tests of ANSI specification 156.2-2011 Grade 1.
- Fire Test: UL listed, 3 hours fire rated.

### Trim Specifications:

- Solid Stainless Steel interior and exterior tapered levers for ADA and Anti-Ligature compliance.
- Levers recessed into tapered Stainless Steel thru-bolted rose assemblies
- Small Format Interchangeable Core in lever handle to operate lockset and block lever removal on most functions, including passage.

Door Prep: ANSI 115.2 and/or A115.1W

Door Thickness Range: 1-5/8" through 1-7/8"

Lock Chassis:

Grade 1 compliance with solid Stainless Steel cast retractor.

Latch:

- Solid Stainless Steel with deadlocking pin (depending on function)
- Standard 1/2" throw; Optional 3/4" throw.
- Standard 2-3/4" backset. Optional 2-3/8", 3-3/4", 5" available.
- Standard front size 1-1/8" x 2-1/4".

Strike:

Standard 4-7/8" Stainless Steel; Optional 2-3/4" T strike available.



## FUNCTIONS

COMM. CYL	SFIC CORE CYL.	DESCRIPTION	ANSI #
<b>KEYED</b>			
DC	RDC	COMMUNICATING	F80
B	RB	ENTRY	F82A
S	RS	CLASSROOM	F84
F	RF	STOREROOM	F86
DW	RDW	INSTITUTION	F87
DA	RDA	VESTIBULE	F88
T	RT	CORRIDOR	F90
TK	RTK	HOSPITAL/PRIV.	F90 MOD.
GB	RGB	STORE DOOR	F91
BS	RBS	SVC. STATION LOCK	F92
H	—	HOTEL	F93
FB	RFB	COMM. STOREROOM	F112
SB	RSB	COMM. CLASSROOM	F113
FEL	RFEL	ELECTRONICALLY LOCKED	—
FEU	RFEU	ELECTRONICALLY LOCKED	—
<b>KEYLESS</b>			<b>ANSI #</b>
AQ	—	EXIT	F83
FQ	—	EXIT	F89
L	—	PRIVACY	F76
LK	—	PRIVACY	F76 MOD.
N	—	PASSAGE	F75
NB	—	COMM. PASSAGE	F111
P	—	PATIO	F77
<b>DUMMY TRIM</b>			<b>ANSI #</b>
DO	—	DUMMY TRIM OUTSIDE	—
DT	—	FUL DUMMY TRIM	—

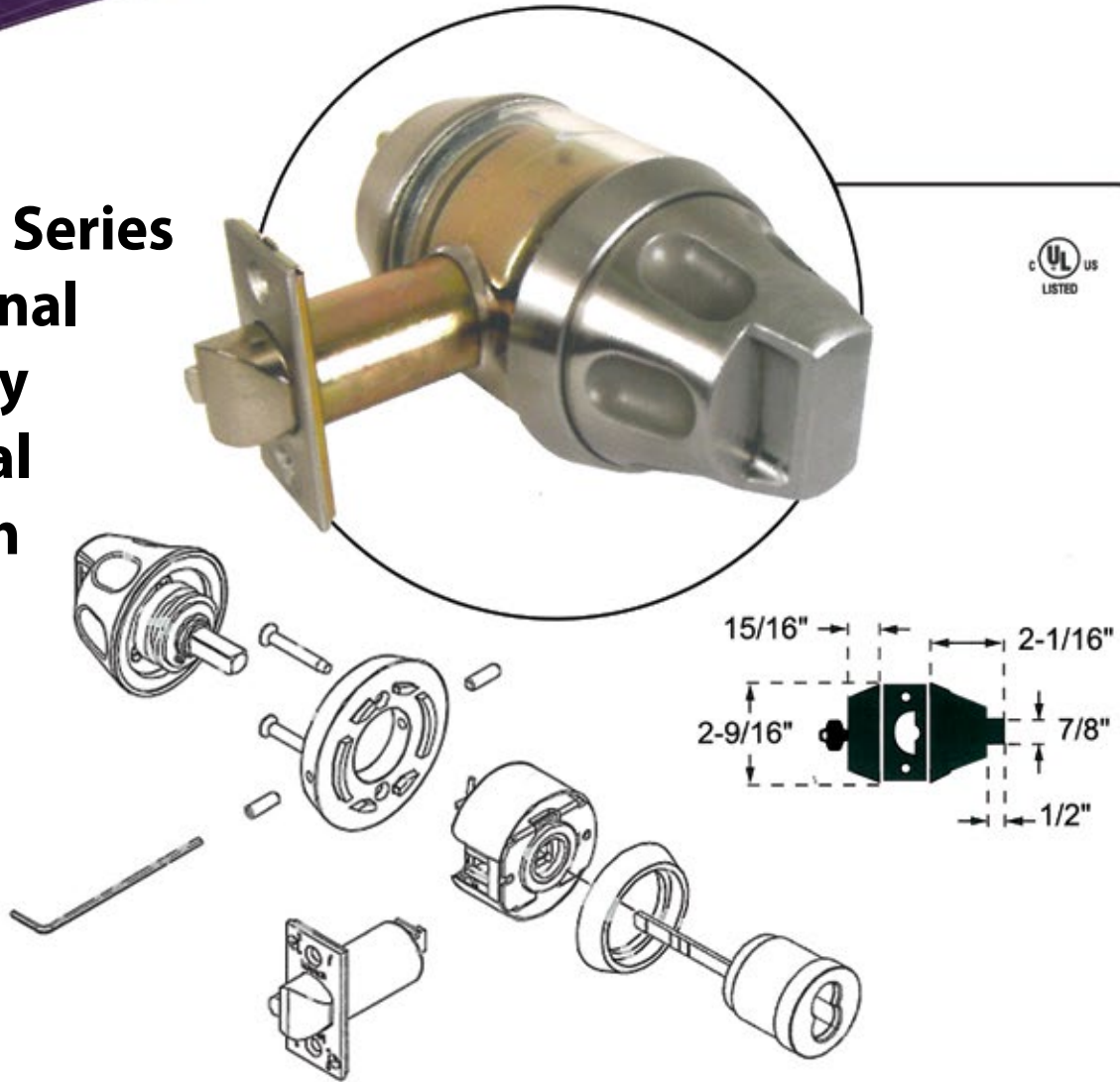
### How To Order

Model Series	Backset	Function	Finish	Strike	*Options
MB195SS	2	RA	630	S1	G1
MB195SS	2 – 2-3/8" 3 – 2-3/4" standard 4 – 3-3/4" 5 – 5"	See Function Chart	630	S1 - ASA Strike standard S2 - T Strike	AM Anti-Microbial Coating  *See Option Codes on p.3

**I/C core throw members ARE included.**



# MB180SS Series Institutional Life Safety Cylindrical Deadlatch Locksets – Knobs



## FEATURES:

**ANSI Test:** Meets or exceeds all ANSI A156.5 test specifications

### Performance Specifications:

Life Test: 1,500,000 cycles minimum.

### Trim Specifications:

Exterior & Interior Trim:

- Solid stainless steel interior and exterior tapered knobs recessed into thru-bolted roses.
- Specially designed finger indented safety knobs with recessed grip and ergonomically designed integral grooved turn knob for elderly and handicapped access.

- Needle bearings ensure smoothness of operation.
- Cylinder: Solid stainless steel cylinders with solid stainless steel security collars  
Strike: #1136, 2-3/4" T strike; #1135 4-7/8" ASA strike optional  
Door Thickness: 1-3/4"  
Door Prep: ANSI 115.2  
Latch: ANSI 156.2, Grade 1, 3 Hour fire rated  
Backset: 2-3/4" Backset; 2-3/8", 3-3/4" and 5" backsets also available  
Latch Face: 1-1/8" x 2-1/4" with tamper proof screws  
Latch Throw: 9/16"

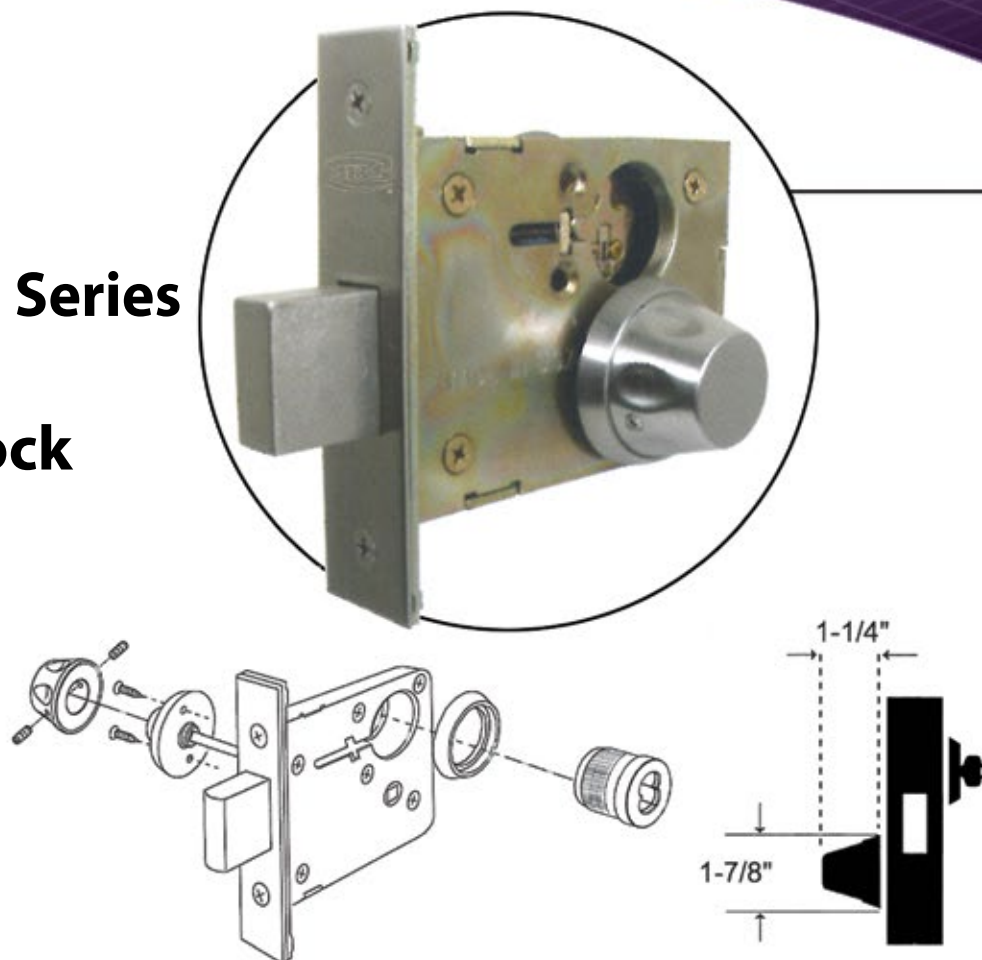
## FUNCTIONS

KEYED COM CYL SFIC CORE CYL SINGLE CYLINDER, WITH DEADBOLT ANSI #			
K	RK	CYLINDER x KNOB	EO121
KEYLESS ANSI #			
N	—	PASSAGE	F75

## How To Order

Model Series	Backset	Function Code	Finish	Strike	*Options
MB180SS	3	RK	630	S1	G1
MB180SS	2 – 2 3/8" 3 – 2 3/4" 4 – 3 3/4" 5 – 5"	See Function Chart	630	S1 ASA Strike standard S2 – T Strike	AM – Anti-Microbial Coatin *See Option Codes on p.3

# MB31SS55 Series Auxiliary Mortise Lock



## FEATURES:

### Trim Specifications

Interior Trim: Solid stainless steel interior trim including finger indented safety knobs which recess into solid brass through-bolted roses.

### Series 31 Deadlock Specifications ANSI E06071

### Cylinder X Turnpiece

Deadbolt by outside key. Interior safety knob will retract but not project deadbolt.

Backset: 2-3/4"

Strike: #4035 1-1/8" x 3-1/8" standard, #3135 4-7/8" x 1-1/4" optional

Bolt Throw: 1" Stainless steel with hardened roll pins

Case: Stamped steel

Front: 1-1/16" x 4-45/8" adjustable bevel

Cylinder: Accepts 6 or 7 pin Small Format

Interchangeable Cores.

## FUNCTIONS

COMM. CYL.	ACCEPTS SFIC CORE CYL.	DESCRIPTION	ANSI #
<b>MORTISE DEADLOCK KEYED SINGLE CYLINDER, WITH DEADBOLT</b>			
K	RK	CYLINDER x KNOB	E 06071
S	RS	CLASSROOM	E 06091

## How To Order

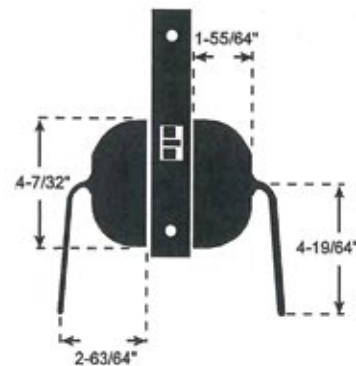
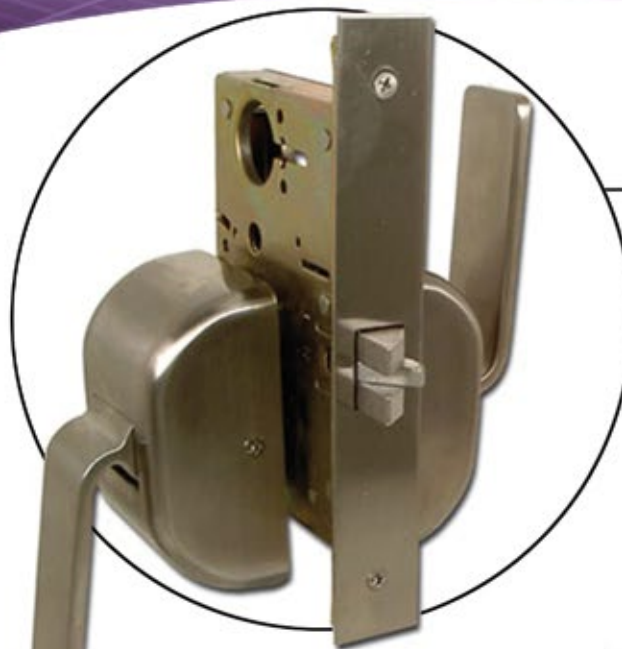
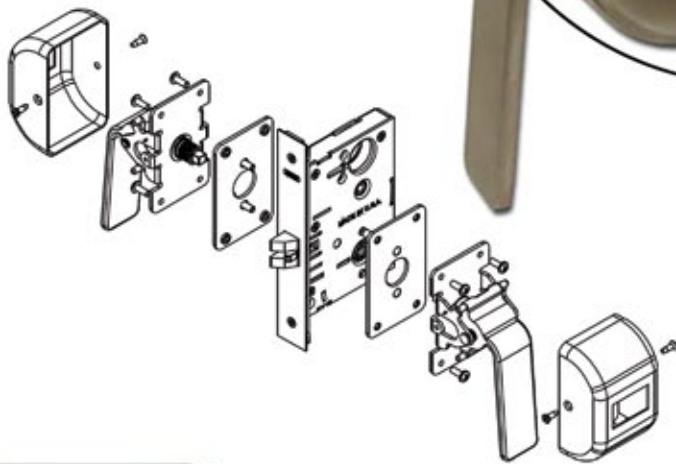
Model Series	Function Code	Finish	Strike	Options
MB31SS55	RK	630	A	G1
MB31SS55	See Function Chart	630	A - #4035 1-1/8" x 3-1/8" Standard B - #3135 4-7/8" x 1-1/4" Optional	AM Anti-Microbial Coating *See Option Codes on p.3

**I/C core throw members ARE included.**





# MB5PD Series Mortise Hospital Push/Pull Paddlesets



## FEATURES:

### Mortise - ANSI-A156.13 Grade 1:

Backset: 2-1/2", 2-3/4" standard

Strike: #9035, 4-7/8" ASA curved lip strike

Door Thickness: 1-3/4", self-adjusting for thicker doors

- Lead lining and engraving available
- ADA Compliant

- Non-Handed
- Government standard #161
- Functional, modern design with variable mounting positions
- Short throw angle allows for easy push/pull action to open doors even when hands are not free
- Standard 630 finish
- Universal assemblies can be push/pull vertical up or down
- Easily reversible configuration for push or pull styles

## How To Order

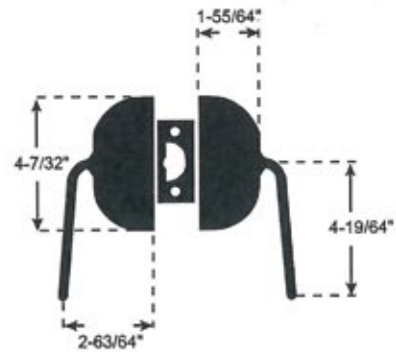
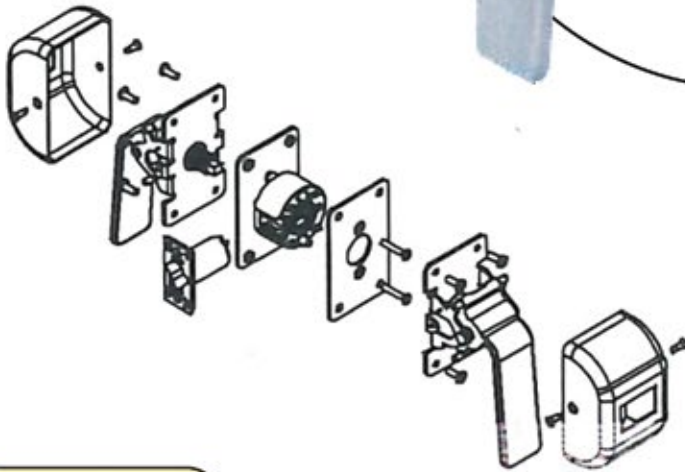
Model Series	Function Code	Finish	*Options
MB5PD 3	RA	630	G1
MB5PD 2 – 2 3/4" Backset	See Function Chart	630	AM – Anti-Microbial (contact MBS for details)  *See Option Codes on p.3
MB55PD 3 – 2 1/2" Backset			

## FUNCTIONS

COMM. CYL.	ACCEPTS SFIC CORE CYL.	DESCRIPTION	ANSI #
<b>KEYED SINGLE CYLINDER, NO DEADBOLT</b>			
D	RD	OFFICE VEST.	
DW	RDW	VESTIBULE	
E	RE	OFFICE	F04
EW	REW	STOREROOM	F07
J	RJ	CLASSROOM	F05
JM, JR	RJM, RJR	HOSPITAL	F06
GL	RGL	INSTITUTIONAL PRIVACY	F26
EL	REL	ELECTRICALLY LOCKED	
EU	REU	ELECTRICALLY UNLOCKED	
<b>KEYED SINGLE CYLINDER, w/DEADBOLT</b>			
A	RA	ENTRANCE	F08, F10
B	RB	ENTRANCE	F21
F	RF	DORMITORY	F113
FS	RFS	DORMITORY	—
FW	RFW	DORMITORY	—
FD	RFD	APARTMENT	F20
H	—	HOTEL	F15
LH	RLH	SPECIAL PRIVACY	—
<b>KEYED DOUBLE CYLINDER, NO DEADBOLT</b>			
G	RG	APARTMENT	F09
GC	RGC	INTRUDER LATCHBOLT	F32
GG	RGG	CLASSROOM SECURITY	—
GR	RGR	CLASSROOM SECURITY w/HOLDBACK	—
WW	RWW	INSTITUTIONAL	F75
<b>KEYED DOUBLE CYLINDER, w/DEADBOLT</b>			
AC	RAC	ENTRANCE	F35
C	RC	STOREROOM	F14
FA	RFA	DORMITORY	F11
FC	RFC	INTRUDER DEADBOLT	F34
FX	RFX	DORMITORY	F33
<b>KEYLESS</b>			
N	—	PASSAGE	F01
L	—	BATHROOM	F02
LF	—	PRIVACY	F19
LJ	—	PRIVACY	F22
EX	—	EXIT	F31



## MB180PD Series Cylindrical Hospital Push/ Pull Paddlesets



### FEATURES:

#### Cylindrical - ANSI-A156.2 Grade 1:

- Backset: 2-3/4" standard, 2-3/8" and 5" optional
- Strike: #1136 2-3/4" "T" strike; #1135 4-7/8" ASA strike optional
- Door Thickness: 1-3/4", self-adjusting for thicker doors
- Lead lining and engraving available
- ADA Compliant
- Government standard #161
- Functional, modern design with variable mounting positions
- Short throw angle allows for easy push/pull action to open doors even when hands are not free

- Standard 630 finish
- Universal assemblies can be push/pull vertical up or down
- Easily reversible configuration for push or pull styles
- Hand: Handed, Reversible in field.

### FUNCTIONS

KEYLESS		ANSI #
N	PASSAGE	F75

### How To Order

Model Series	Backset	Function Code	Finish	Strike	*Options
MB180PD	3	N	630	S1	
MB180PD	2 - 2 3/8" 3 - 2 3/4" standard 4 - 5"	N Function Only	630	S1 - ASA Strike standard S2 - T Strike	AM - Anti - Microbial EN - Engraving (contact MBS for details) *See Option Codes on Pg.3