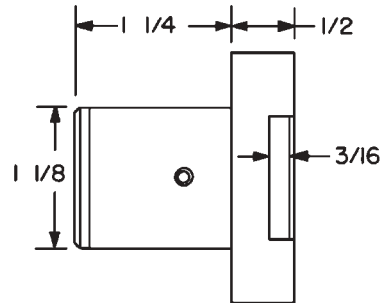
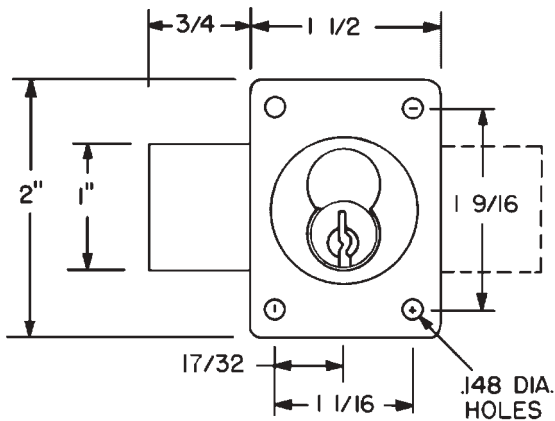
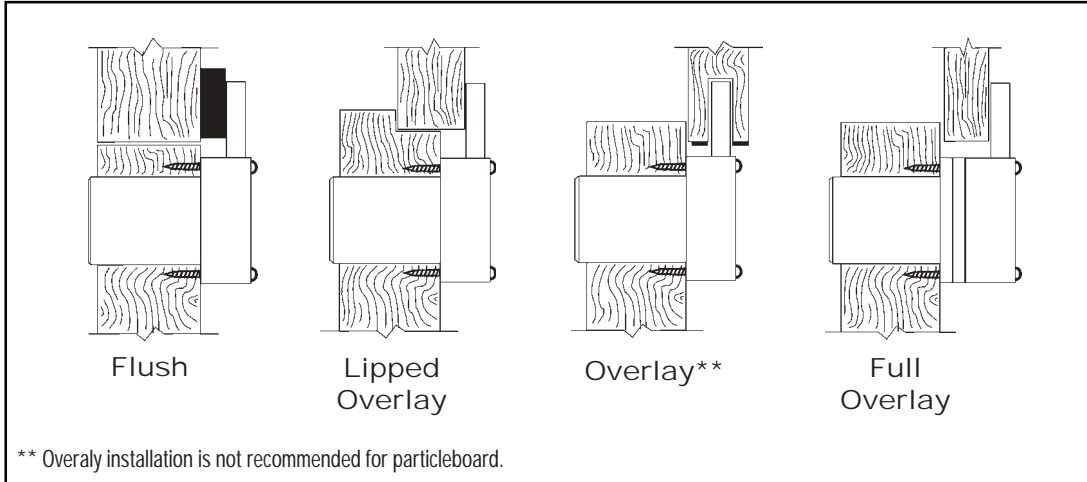


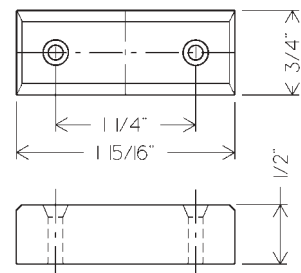
# Installation Instructions

## 721DR

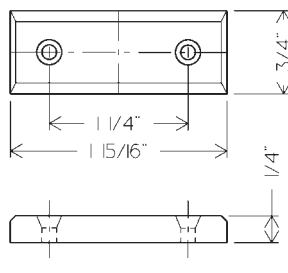
### Typical Installation



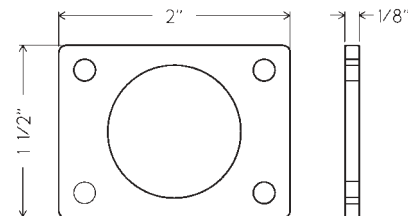
Use of spacers and strikes depends on application and material thickness.



10-055 - 1/2" bar strike



10-054 - 1/4" bar strike



10-350 - 1/8" spacer

Title <b>Installation instructions for 721DR series cabinet lock</b>				
Series <b>721DR</b>	Barrel Length <b>1-1/4"</b>	Bolt type <b>Deadbolt</b>	Mounting <b>Surface</b>	Revision Date <b>06/2004</b>

