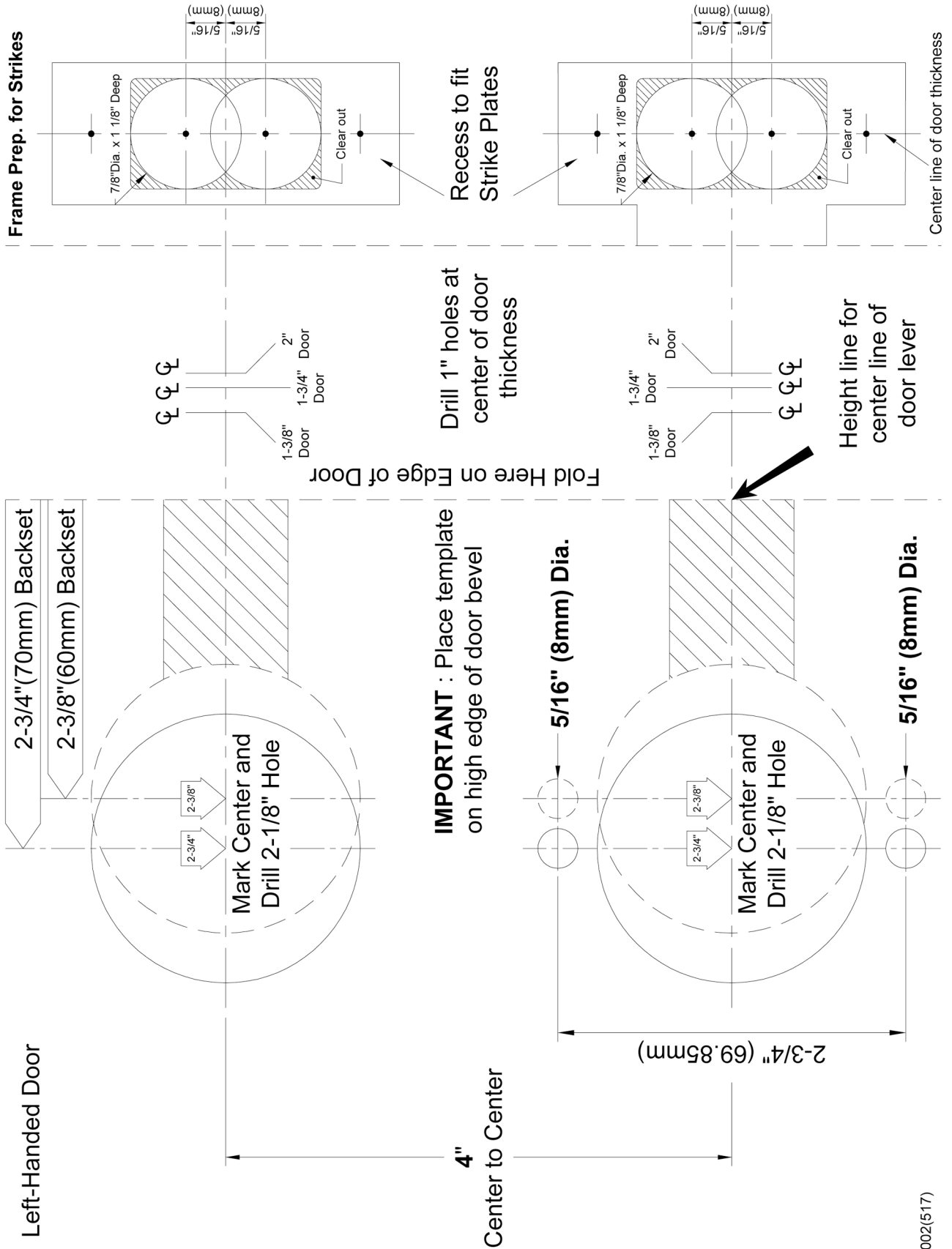




GF2 Series

Installation Template of Interconnected Lock

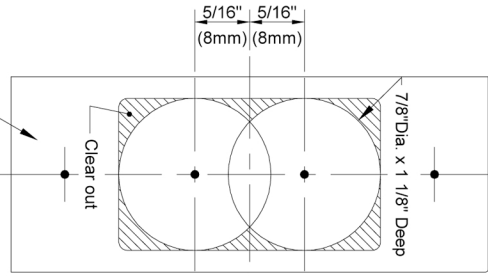




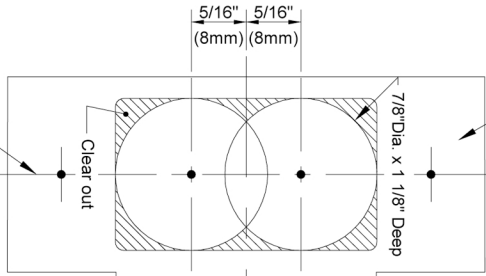
GF2 Series

Installation Template of Interconnected Lock

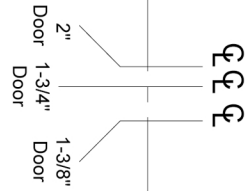
Frame Prep. for Strikes



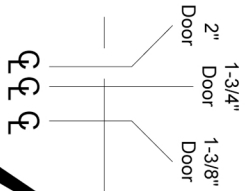
Recess to fit Strike Plates



Center line of door thickness

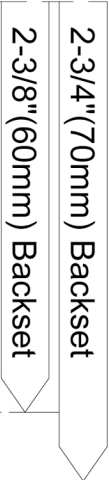


Drill 1" holes at center of door thickness

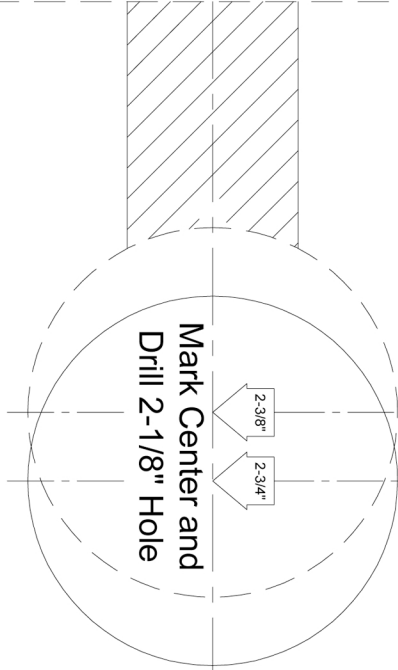


Height line for center line of door lever

Fold Here on Edge of Door

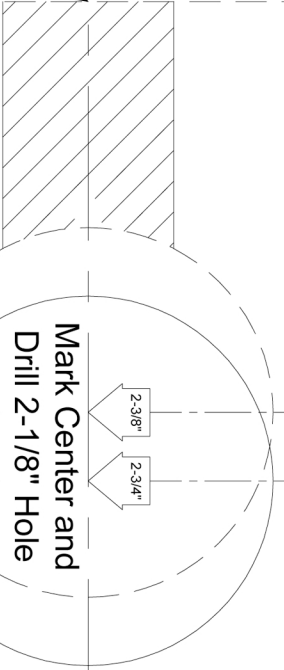


Right-Handed Door



IMPORTANT : Place template on high edge of door bevel

5/16" (8mm) Dia.



5/16" (8mm) Dia.

2-3/4" (69.85mm)

Center to Center 4"