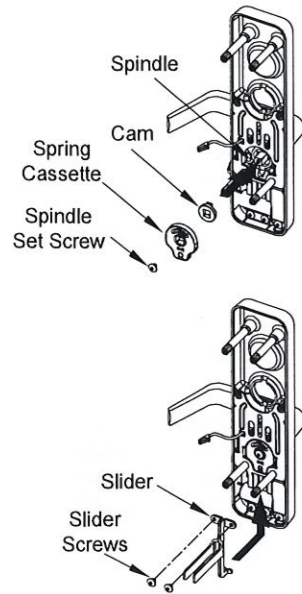


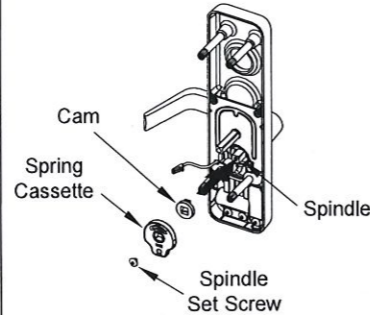
## HOW TO ASSEMBLE TRIM

### FOR FUNCTIONAL LEVER



1. Determine lever handing. (RHR shown; LHR opposite)
2. Insert cam on spindle.
3. Insert spring cassette and make sure the direction of spring cassette matches with lever handing.
4. Rotate lever to check function, tighten spindle set screw.
5. Install slider by fitting tabs into guide under mechanism.
6. Fasten slider set screws with moving parts in mechanism.

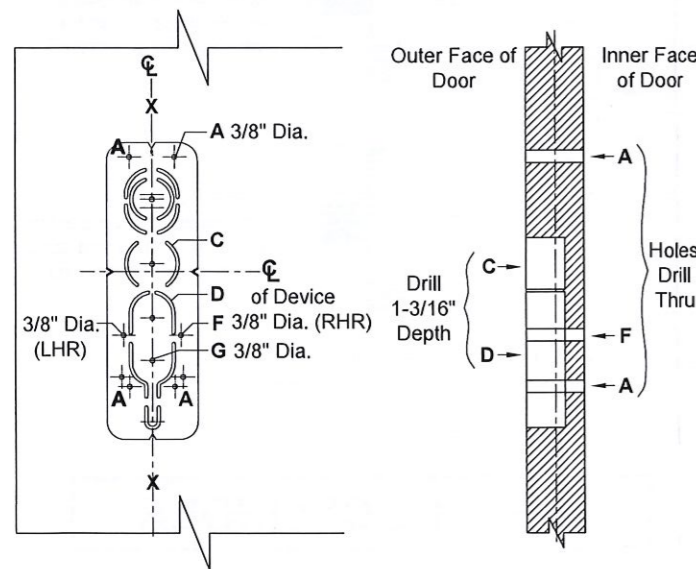
### FOR MORTISE LOCK



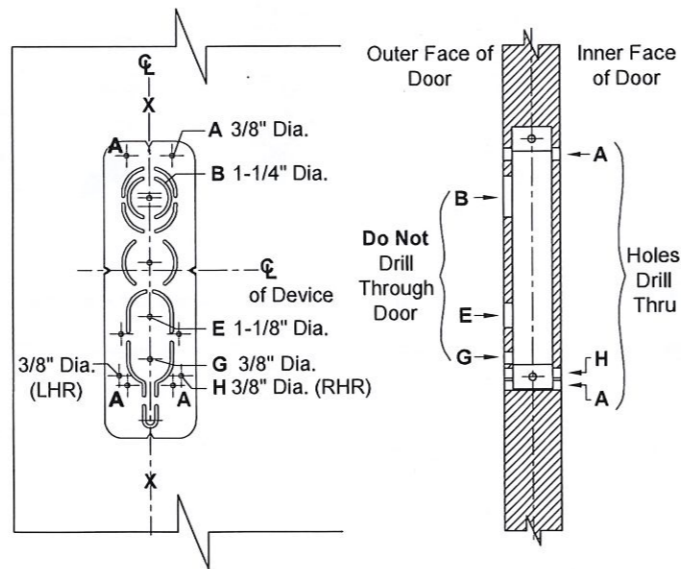
1. Determine lever handing. (RHR shown; LHR opposite)
2. Insert cam on spindle.
3. Make sure the direction of spring cassette matches with lever handing. Insert spring cassette.
4. Rotate lever to check function and tighten spindle set screw.

## DOOR PREPARATION FOR E300 SERIES TRIM

### FOR RIM AND VERTICAL ROD DEVICE



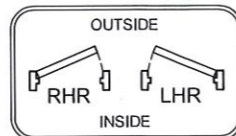
### FOR MORTISE LOCK



### TEMPLATE APPLICATION CHART

DEVICE TYPE	RIM AND VERTICAL ROD		MORTISE LOCK	
CUT OUT ILLUSTRATION				
TRIM DESCRIPTION	E309R	E314R	E309M	E314M
PREPARATION	A+C+D+F+G	A+D+F+G	A+B+E+G+H	A+E+G+H

NOTE: RHR application shown  
LHR application opposite



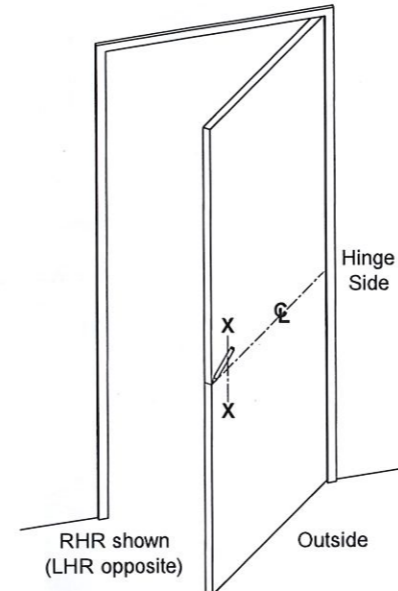
Patent No. 7,634,927 7,748,757  
D623,499 7,836,738 7,887,107  
and other patents pending.

WD-OD002(403)

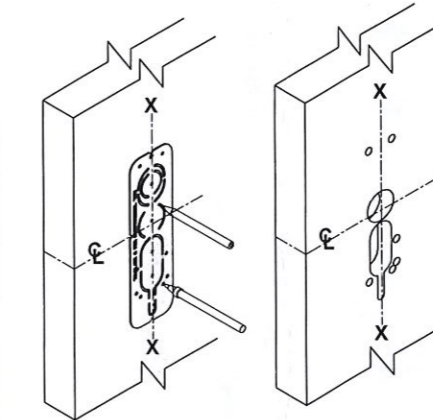
## E300 SERIES ELECTRIC LOCKING TRIM FOR EXIT DEVICE

## INSTALLATION INSTRUCTIONS

### 1 PREPARE DOOR FOR DEVICE AND TRIM.

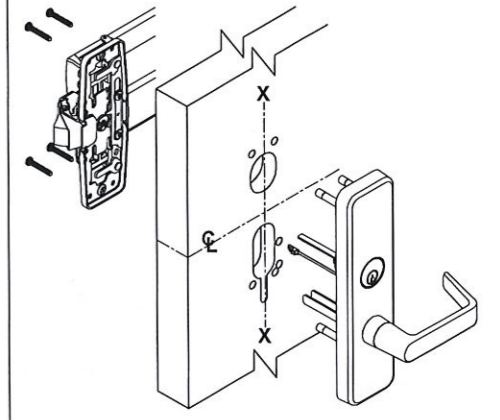


1. Prepare door for exit device. See exit device instructions for holes, backset (line X-X), and center lines.
2. Transfer line X-X from inner (exit device) side of door to outer (trim) side of door. Be extra careful if edge door of door is beveled. Be sure line X-X is parallel to edge of door.



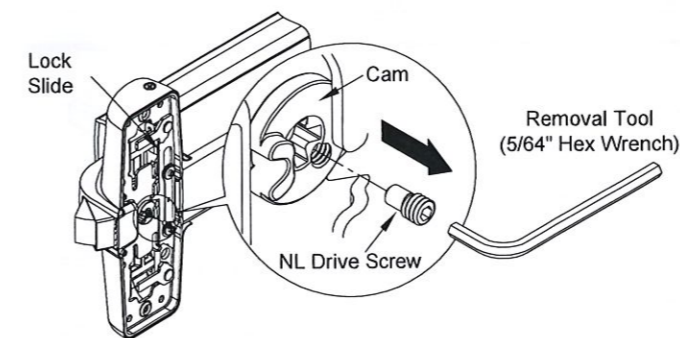
3. Locate X-X line and prepare required holes with "Template C".

NOTE: See "TEMPLATE APPLICATION CHART" on back page for different trim functions.



4. Select trim function, trim handling and assemble trim as needed. (See "HOW TO CHANGE TRIM FUNCTION", "HOW TO ASSEMBLE TRIM" and "INSTALL CYLINDER" on page 3 and 4)

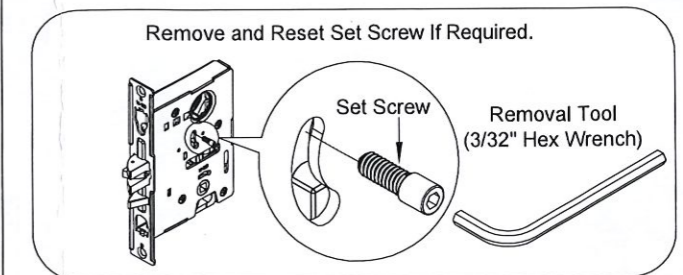
### 2 CHECK EXIT DEVICE NL DRIVE SCREW AND LOCK SLIDE.



Make sure the NL drive screw is installed in the exit device center case cam with the exit device lock slider in the upper position.

NOTE: If the lock slider is not in the correct position (as mentioned above), remove NL screw to unlock cam and rotate it with screwdriver to move slider to the right position and place back NL screw.

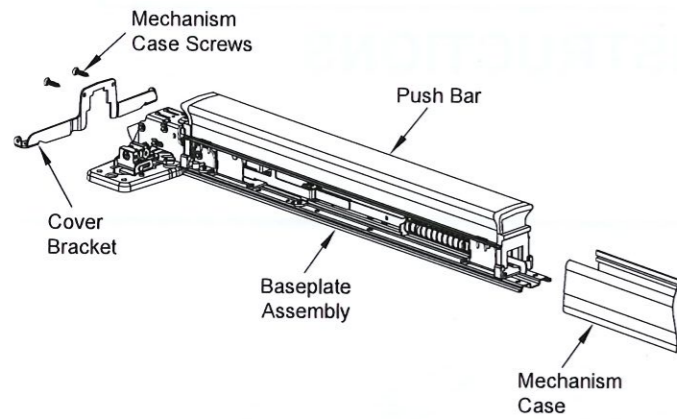
### 3 PREPARE MORTISE LOCK IF NECESSARY.



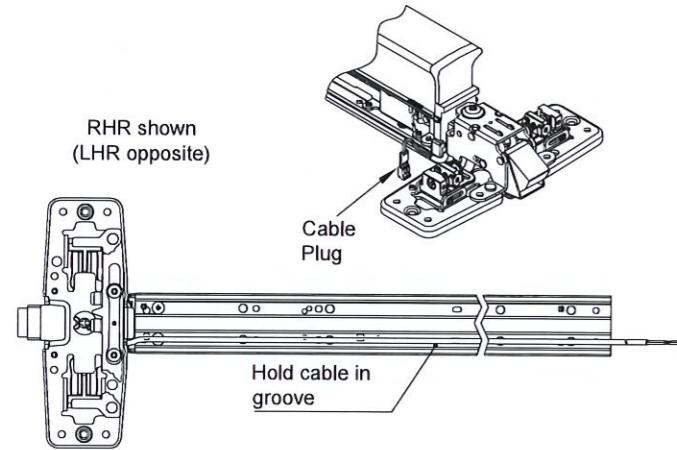
For mortise device applications, NL screw shall be set (by default) in long slot side of mortise lock for NL operations."

NOTE: Set screw is factory set at long slot side for EO,DT, and NL applications.

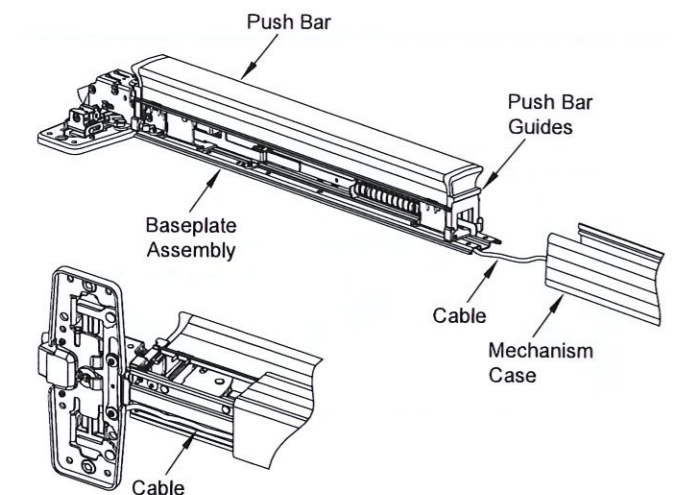
#### 4 ROUTE CABLE THROUGH EXIT DEVICE.



1. Unscrew Mechanism case screws and remove cover bracket.
2. Slide off mechanism case.



3. Route cable through base plate assembly as shown.
4. Set cable along incision at bottom of baseplate.

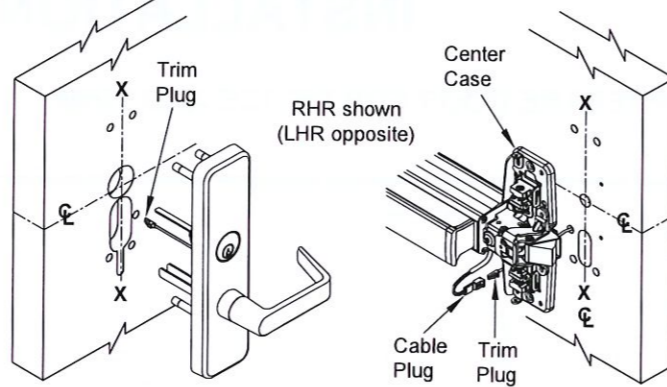


5. Slide mechanism case back to place, align plastic pushbar guides while doing so.
6. Set cover bracket back to place and fasten with case screws.

**NOTE:** Watch out for cable when sliding mechanism case back to place.

#### 5 ROUTE TRIM CABLE THROUGH EXIT DEVICE.

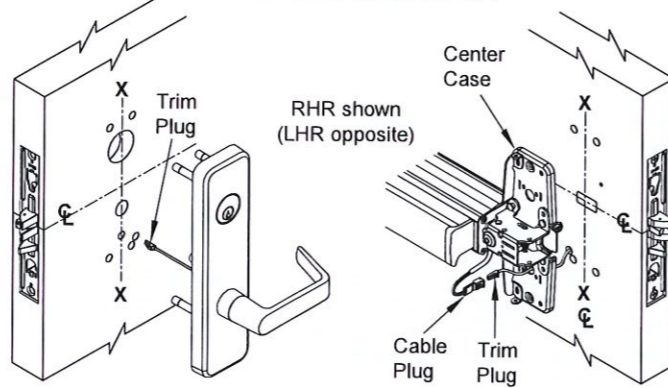
##### FOR RIM AND VERTICAL ROD DEVICE



1. Route trim plug through wire access hole in door.
2. Route trim cable through hole in center case.
3. Connect trim plug and cable plug.

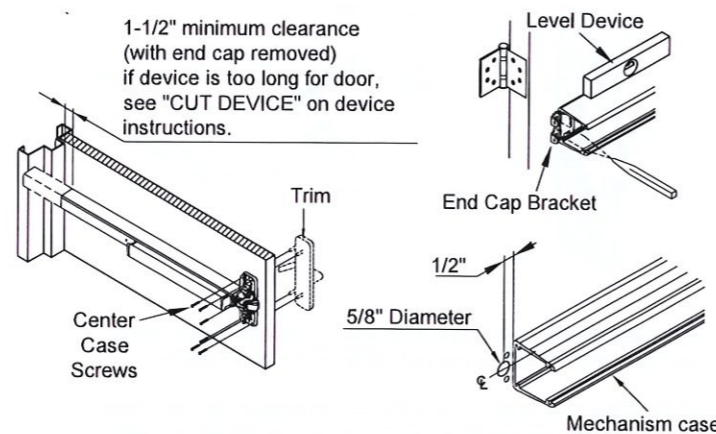
**NOTE:** Make sure wires are not cramped or tangled after installation.

##### FOR MORTISE LOCK



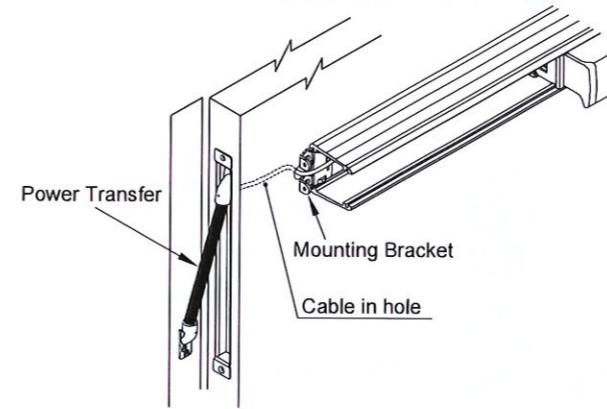
1. Install mortise lock, (see "Mortise lock Instructions").
2. Route trim plug through wire access hole in door.
3. Route trim cable through hole in center case.
4. Connect trim plug and cable plug.

#### 6 INSTALL TRIM AND SECURE DEVICE CENTER CASE TO DOOR.



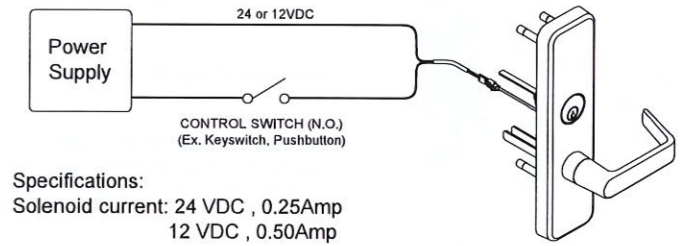
1. Momentarily fix device and trim to door with screws.
2. Insert end cap bracket into push bar assembly against mechanism case. Level device, mark and drill two(2) holes for Bracket Screws.
3. Mark and drill a 5/8" hole used for wire access and routing.

#### 7 INSTALL END CAP BRACKET AND ROUTE WIRING THROUGH POWER TRANSFER.



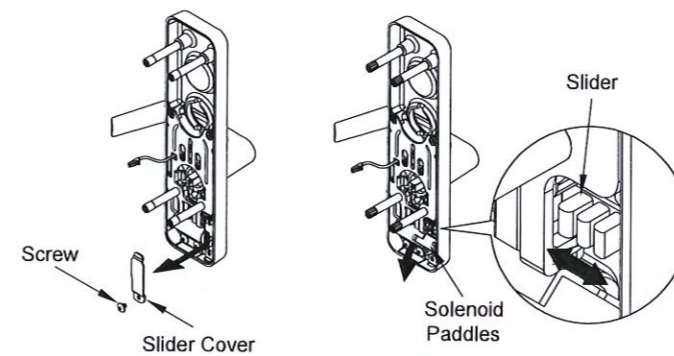
1. Slide cable into hole (mentioned in previous section).
2. Use Power Transfer to guide wiring from exit device to door frame. (For details see "Power Transfer Instructions")
3. Insert cover plate, slide anti-rattle clip in position (2" minimum from end), and attach end cap with two(2) end cap screws. (See "Exit device instructions")

#### 8 BASIC WIRING.

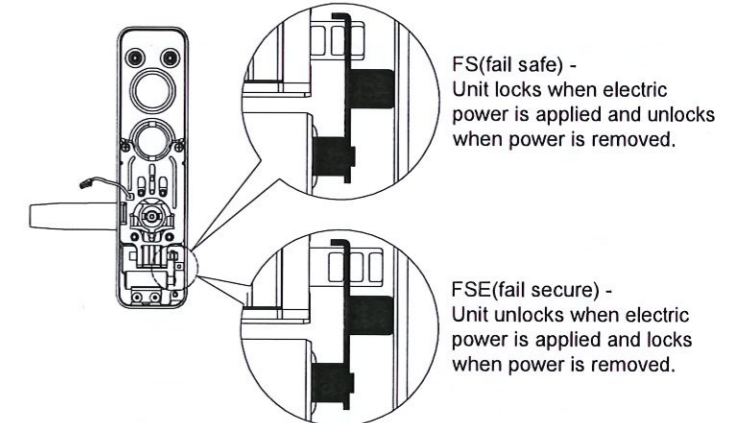


For the power supply wiring connection, two non-polarized wires are applied, one of which is directly connected to the power source (power supply), while the other one is attached to a control device (card reader, key pad, push button, dry contact, etc.) connected to the power source.

### HOW TO CHANGE TRIM FUNCTION



1. Remove the slider cover and screw.
  2. Rotating paddles to leave the slider position.
  3. Move the slider to select the FS (fail safe) and FSE (fail secure) function.
- NOTE:** Product is shipped in Fail Safe (FS) configuration.



4. Paddles to the correct function of position.
5. Reinstall the slider cover and screws.

#### TEST TRIM FUNCTION

##### FS (Fail Safe) Configuration:

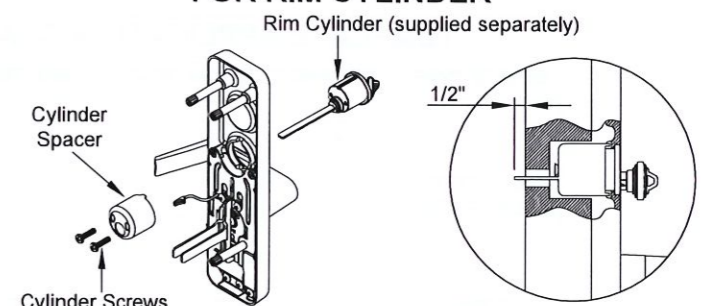
1. Apply power to lock trim.
2. To unlock trim, disconnect from power source or actuate control device.
3. If key cylinder is present, check for key override feature (night latch) proper functioning when device is connected to power source. Usage of the key will unlock the door without need of turning trim lever; device locks after removal of key.

##### FSE (Fail Secure) Configuration:

1. Apply power to unlock trim.
2. To lock trim, disconnect from power source or actuate control device.
3. If key cylinder is present, check for key override feature (night latch) proper functioning when device is disconnected to power source. Usage of the key will unlock the door without need of turning trim lever; device locks after removal of key.

### INSTALL CYLINDER

#### FOR RIM CYLINDER



1. Mount rim cylinder to cylinder spacer and attach to outside trim with two(2) cylinder screws.
  2. Make sure the tailpiece is extending 1/2" from the inside face of door.
- NOTE:** Cut off tailpiece for different door ranges and various cylinder lengths.