

Closers



CATALOG

Index

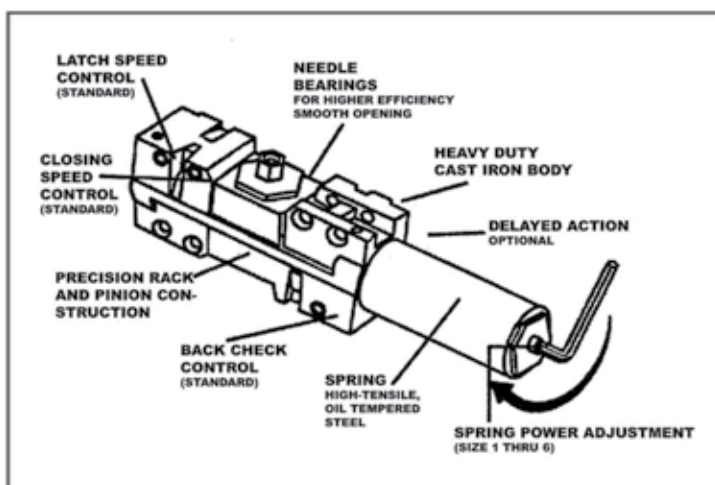
QDC40A	02
QDC70	05
QDC85	08
QDC90	10
QDC53/54	12



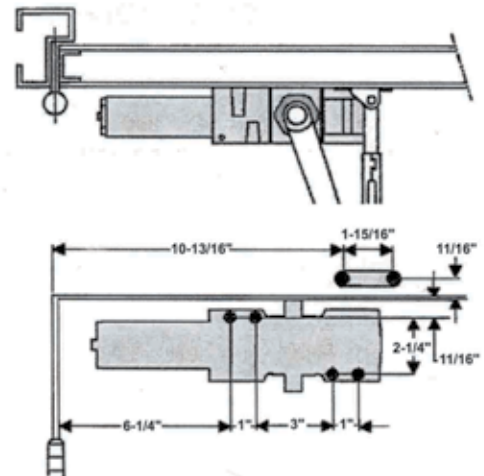
Feature Highlights:

- For heavy traffic areas, exterior or interior
- Heavy duty cast iron body, non handed
- Precision rack and pinion construction
- Regular arm standard, Friction Hold-Open, Cush, and Hold-Open and Cush are optional
- Tri-Style installation: includes hardware and brackets to allow for regular, top jamb, and parallel arm installation
- Adjustable spring power from size 1 to size 6, factory preset size 3
- Separate and adjustable Latch, Sweep and Backcheck valves standard
- Optional Adjustable Delayed action (DA) / barrier free (BF) for elderly or handicapped
- UL listed molded plastic full cover standard, metal cover optional
- All-weather fluid, allowing door closer to perform in temperatures ranging from -31° F to 140°F
- Needle Bearing for higher efficiency
- 1-1/2" (38 mm) diameter piston
- 5/8" (16 mm) diameter pinion
- 2-5/16" (58 mm) projection (standard cover)
- Door Opening: regular arm 120°, parallel arm 180°, and top jamb 120°
- Finish: Aluminum, Duro and 622; Flat Black Coated finishes. Other finishes upon request
- LCN 4040 compatible model

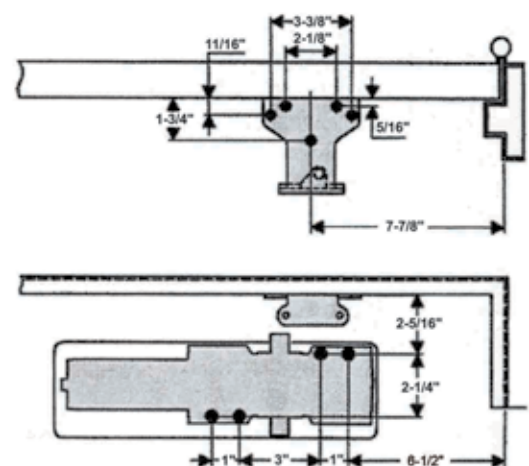
Profile:



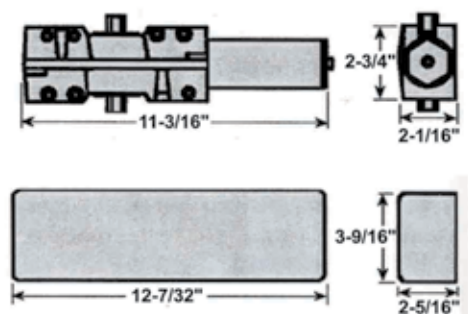
Pull Side Installation



Push Side Installation



Closer Body





QDC40A

HEAVY DUTY GRADE 1 DOOR CLOSER

Options

- Available arms: Friction Hold-Open, Cush (2x), and Cush and Hold-Open
- Drop Plate: please refer to drop plate section

Arms



- **Friction Hold Open Arm (Standard)**
Heavy duty parallel hold-open adjustable arm.
QDC ARM-01-40A



- **Heavy Duty Arm**
Heavy duty parallel cush arm.
QDC ARM-02-40A



- **Hold-Open and Cush Arm**
Heavy duty parallel hold-open and cush arm.
QDC ARM-03-40A



- **Slide Track Arm**
QDC40A-TRACK

Drop Plates

- **QDC40A-18**

Required for hinge side mount where top rail is less than 3 3/4" (95 mm) measured from the top. Plate requires top rail minimum 2" (51 mm) in height.



- **QDC40A-18TJ**

Applicable in places where head frame face is less than 3 1/2" (89mm) in height. Plate requires 1 3/4" (44 mm) minimum head frame.



- **QDC40A-18G**

Applicable in places where top of head frame in flush with ceiling condition. Plate requires 1 3/4" (44 mm) minimum head frame.



- **QDC40A-18PA**

Required for parallel arm mounting where top rail is less than 5 1/2" (140 mm), measured from the top. Plate requires 2" (51 mm) minimum top rail.



Code Compliance

- UL & ULC listed
- Meets Grade 1 requirements of ANSI/BHMA A156.4
- Adjustable to meets requirements of the Americans with Disabilities Act



Important Notes - Door Closers for Low Opening Force Applications:

Door closers installed in openings required to meet the requirements of The Americans with Disabilities Act of ANSI Standard A117.1, when adjusted to meet those requirements, may not provide adequate closing power to dependably close and latch the door.

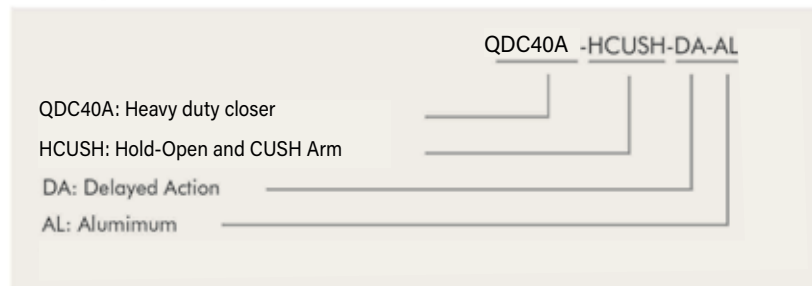


HOW TO ORDER

QDC40A Door Closer

Series	Arm Type	Delayed Action	Finishes
QDC40A: Heavy duty Closer	Blank: Regular Arm (Standard) 01: HOA, Hold-Open Arm 02: CUSH, CUSH Arm 03: HCUSH, Hold-Open CUSH Arm TRACK: Slide Track Arm	Blank: No Delayed Action DA: Delayed Action	AL: Aluminum DU: Duro 622: Flat Black Coated

Order Sample



QDC40A Drop Plate

Series	Finishes	Example:
QDC40A-18: for hinge side mount QDC40A-18G: for head frame flush with ceiling QDC40A-18TJ: Head frame less than 3 1/2" QDC40A-18PA: for Parallel Arm Mounting	AL: Aluminum DU: Duro 622: Flat Black Coated	QDC40A-18: Friction Hold-Open Arm AL: Aluminum

QDC-40A Arm

Series	Finishes	Example:
QDC-ARM-01-40A: Friction Hold-Open Arm QDC-ARM-02-40A: Cush Arm QDC-ARM-03-40A: Cush and Hold-Open Arm QDC40A-TRACK	AL: Aluminum DU: Duro 622: Flat Black Coated	QDC-ARM-01-40A: Friction Hold-Open Arm AL: Aluminum



QDC70

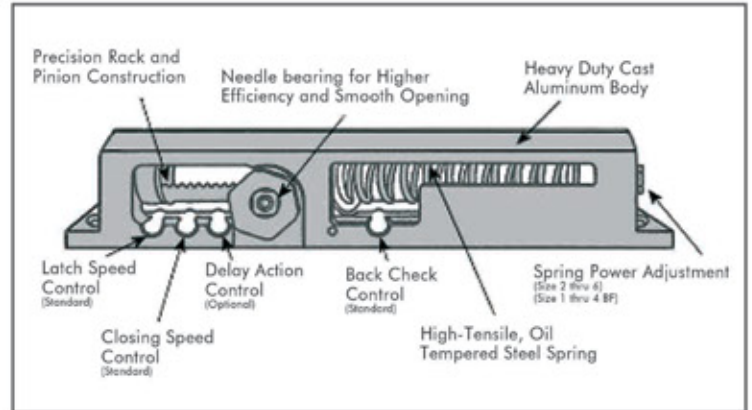
GRADE 1 DOOR CLOSER



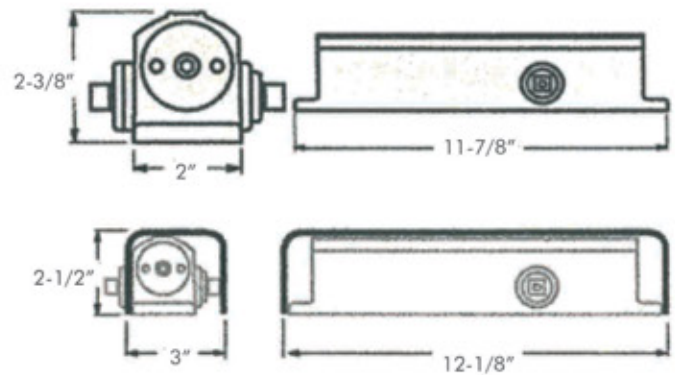
Feature Highlight:

- Designed for high traffic application, exterior or interior
- Heavy duty aluminum body, non-handed
- Precision rack and pinion construction
- Regular arm standard, Friction Hold-Open, Cush, Hold-Open and Cush, and Slide Track arms optional
- Tri-Style installation: includes hardware and brackets to allow for regular, top jam, and parallel arm installation
- Adjustable spring power from size 2 to size 6 (QDC-70), and size 1 to size 4 (QDC-70BF)
- Separate and adjustable Latch, Sweep and Backcheck valves standard
- Delayed Action standard on QDC-70BF
- UL listed molded plastic full cover standard, metal cover optional
- All-weather fluid, allowing door closer to perform in temperatures ranging from -31°F to 140°F
- Needle Bearing application for higher efficiency
- Highly precise closer for high performance
- 1-1/2" (38mm) diameter piston
- 7/16" (11mm) diameter pinion
- 2-1/2" (64mm) projection (standard cover)
- Finish: Aluminum and Duro stock finishes, other finishes upon request

Profile:



Door Closer and Cover



Options

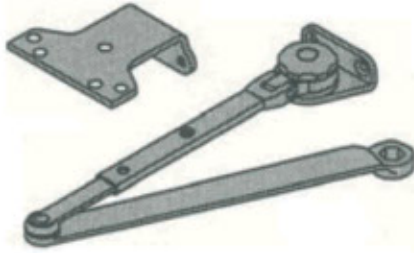
- Available arms: Friction Hold-Open, Cush, Cush and Hold-Open, and Slide Track
- Drop Plate: please refer to drop plate section



Arms

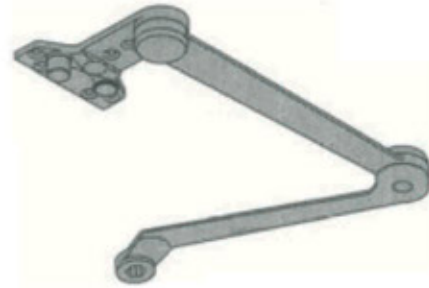
- **Friction Hold Open Arm**

Heavy duty parallel hold-open adjustable arm.
QDC ARM-01-70



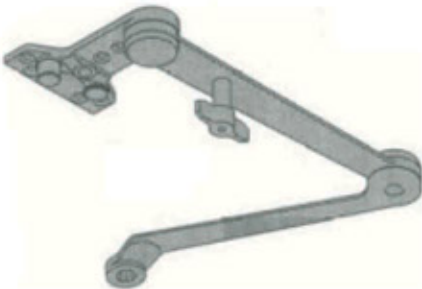
- **Cush Arm**

Heavy duty parallel cush arm.
QDC ARM-02-70



- **Hold-Open and Cush Arm**

Heavy duty parallel hold-open and cush arm.
QDC ARM-03-70



- **Slide Track Arm**

Heavy duty parallel slide track arm.
QDC ARM-04-70



Drop Plates

- **QDC-70-DPPA**

For Push side parallel arm installation when mounting surface height is less than 4-3/4" (121mm)



- **QDC-70-DP**

For Pull side mounting when mounting surface height is less than 3-1/2" (89mm)



Code Compliance

- ANSI: Comply with ANSI A156.4 Grade 1
- UL: UL and ULC listed
- ADA: QDC-70BF adjustable to conform to requirements of The Americans with Disabilities Act





QDC70

GRADE 1 DOOR CLOSER

Important Notes - Door Closers for Low Opening Force Applications:

Door closers installed in openings required to meet the requirements of The Americans with Disabilities Act of ANSI Standard A117.1, when adjusted to meet those requirements, may not provide adequate closing power to dependably close and latch the door.

HOW TO ORDER

QDC 70 Door Closer

Series	Arm Type	Delayed Action	Finishes
QDC70: Heavy duty Closer	Blank: Regular Arm, Standard HOA: Hold Open Arm CUSH: CUSH Arm HCUSH: Hold-Open and Cush Arm	Blank: No Delayed Action DA: Delayed Action BF: Barrier Free Spring Adjustment Size 1 to 4	AL: Aluminum DU: Duro 622: Flat Black Coated

Order Sample

QDC70-HCUSH-DA-AL

QDC70: Heavy duty Iron Cast closer
HCUSH: Hold-Open and Cush Arm
DA: Delayed Action
AL: Aluminum

QDC-70 Drop Plate

Series	Finishes	Example:
QDC-70-DPPA: for push side parallel QDC-70-DP: for pull side mounting	AL: Aluminum DU: Duro 622: Flat Black Coated	QDC-70-DPPA-AL QDC-70-DPPA: for push side parallel AL: Aluminum

QDC-70 Arm

Series	Finishes	Example:
QDC-ARM-01-70: Friction Hold-Open Arm QDC-ARM-02-70: Cush Arm QDC-ARM-03-70: Cush and Hold-Open Arm QDC-ARM-04-70: Slide Track Arm	AL: Aluminum DU: Duro 622: Flat Black Coated	QDC-ARM-02-70-AL QDC-ARM-02: Cush Arm AL: Aluminum





Feature Highlight:

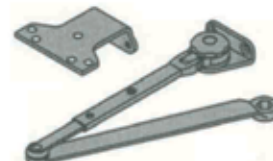
- Designed for high traffic application, exterior or interior
- Heavy duty aluminum cast body, non-handed
- Precision rack and pinion construction
- Regular arm standard, Friction Hold-Open, Cush and Hold-Open and Cush arms optional
- Tri-Style installation: includes hardware and brackets to allow for regular, top jam, and parallel arm installation
- Adjustable spring power from size 1 to size 6, factory preset size 3
- Separate and adjustable Latch, Sweep and Backcheck valves standard
- Delayed Action Optional
- UL listed molded plastic full cover standard, metal cover optional
- All-weather fluid, allowing door closer to perform in temperatures ranging from -31°F to 140°F
- Needle Bearing application for higher efficiency
- Highly precise closer for high performance
- 1-17/64" (32mm) diameter piston
- 29/64" (11.5mm) diameter pinion
- 2-1/2" (64mm) projection (standard cover)
- Finish: Aluminum, Duro and 622: Flat Black Coated finishes. Other finishes upon request

Options

- Available arms: Friction Hold-Open, Cush, Cush and Hold-Open
- Drop Plate: please refer to drop plate section

Arms

- **Friction Hold Open Arm**
Heavy duty parallel hold-open adjustable arm.
QDC-ARM-01-85



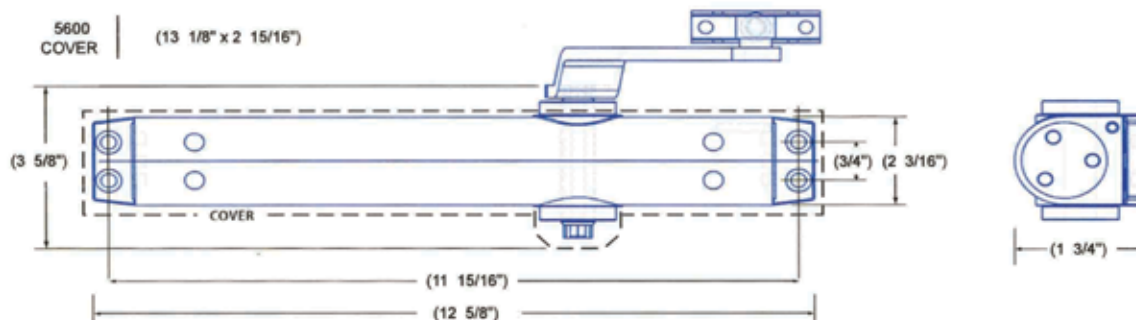
- **Cush Arm**
Heavy duty parallel cushion arm.
QDC-ARM-02-85



- **Hold-Open and Cush Arm**
Heavy duty parallel hold-open and cushion arm.
QDC-ARM-03-85



Profile:





QDC85

GRADE 1 DOOR CLOSER

Drop Plates

•QDC-85-DPPA

For Push side parallel arm installation where a narrow top rail prevents direct mounting



•QDC-85-DP

Provides a solid mounting surface when clearance or mounting surface dimensions are limited



Code Compliance

- ANSI: Comply with ANSI A156.4 Grade 1
- UL: UL and ULC listed
- ADA: Adjustable to conform to requirements of the Americans with Disabilities Act



Important Notes - Door Closers for Low Opening Force Applications:

Door closers installed in openings required to meet the requirements of The Americans with Disabilities Act of ANSI Standard A117.1, when adjusted to meet those requirements, may not provide adequate closing power to dependably close and latch the door.

HOW TO ORDER

Door Closer

Series	Arm Type	Delayed Action	Finishes
QDC85: Heavy duty Closer	Blank: Regular Arm, Standard HOA: Hold Open Arm CUSH: CUSH Arm HCUSH: Hold-Open and Cush Arm	Blank: No Delayed Action DA: Delayed Action	AL: Aluminum DU: Duro 622: Flat Black Coated

Order Sample



QDC85 Drop Plate

Series	Finishes
QDC-85-DPPA QDC-85-DP	AL: Aluminum DU: Duro 622: Flat Black Coated
Example: QDC-85-DPPA-AL	
QDC-85-DPPA	AL: Aluminum

QDC-85 Arm

Series	Finishes
QDC-ARM-01-85: Friction Hold-Open Arm QDC-ARM-02-85: Cush Arm QDC-ARM-03-85: Cush and Hold-Open Arm	AL: Aluminum DU: Duro 622: Flat Black Coated
Example: QDC-ARM-01-85-AL	
QDC-ARM-01: Friction Hold-Open Arm	AL: Aluminum





Feature Highlight:

- Designed for medium traffic application, exterior or interior
- Aluminum cast body, non-handed
- Precision rack and pinion construction
- Tri-Style installation: includes hardware and brackets to allow for regular, top jam, and parallel arm installation
- Adjustable spring power from size 2 to size 5 (QDC-90), and size 1 to size 4 (QDC-90BF)
- Separate and adjustable Latch, Sweep and Backcheck valves standard
- Delayed Action standard on QDC-90BF
- UL listed molded plastic full cover standard, metal cover optional
- All-weather fluid, allowing door closer to perform in temperatures ranging from -31°F to 140°F
- Needle Bearing application for higher efficiency
- 1-13/32" (35.8mm) diameter piston
- 7/16" (11.2mm) diameter pinion
- 3" (76mm) projection (standard cover)
- Finish: Aluminum, Duro and 622: Flat Black Coated finishes. Other finishes upon request

Profile:

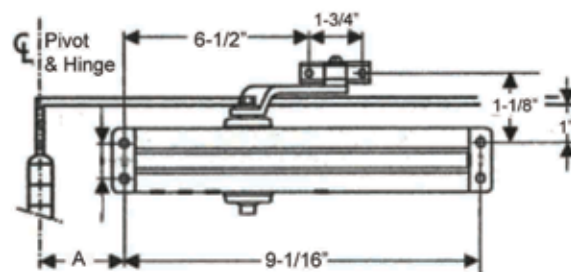
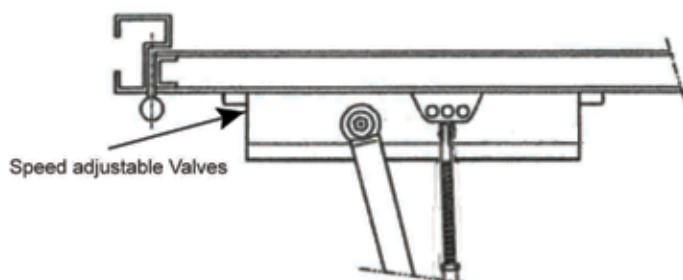
• Closer Body



• QPDC-SLM-SLIM Closer Cover

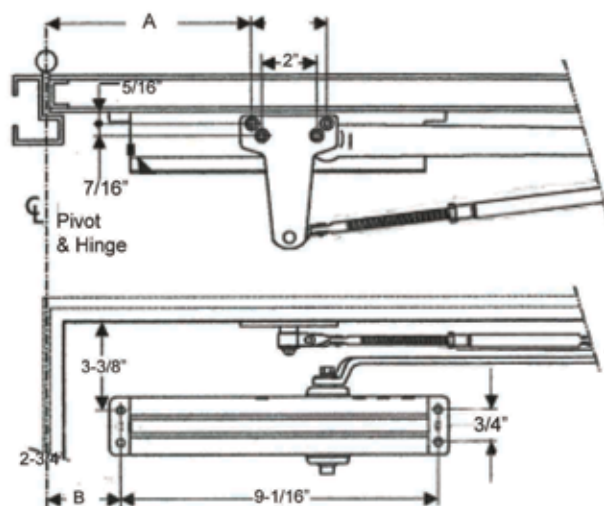


• Pull Side Installation



OPENING	DIM A
120 °	6-1/2"
120° — 180°	4"

• Push Side Installation



OPENING	DIM A	DIM B
120 °	10-3/4"	6-15/16"
120° — 180°	8-3/4"	4-3/4"



QDC90

MEDIUM DUTY GRADE 2 DOOR CLOSER

Code Compliance

- ANSI: Comply with ANSI A156.4 Grade 2
- UL: UL and ULC listed
- ADA: QDC-90BF conforms to requirements of the Americans with Disabilities Act



Important Notes - Door Closers for Low Opening Force Applications:

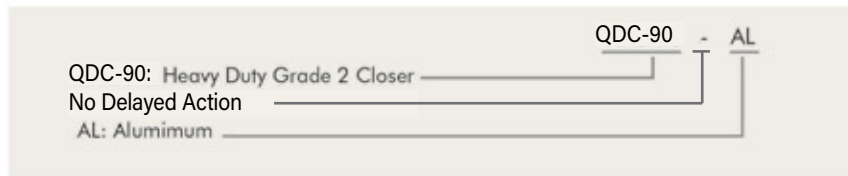
Door closers installed in openings required to meet the requirements of The Americans with Disabilities Act of ANSI Standard A117.1, when adjusted to meet those requirements, may not provide adequate closing power to dependably close and latch the door.

HOW TO ORDER

QDC90 | Door Closer

Series	Function	Finishes
QDC90: Heavy Duty Grade 2 Closer	Blank: No Delayed Action BF: Barrier Free	AL: Aluminum DU: Duro 622: Flat Black Coated

Order Sample



Feature Highlight:

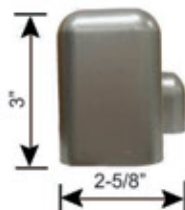
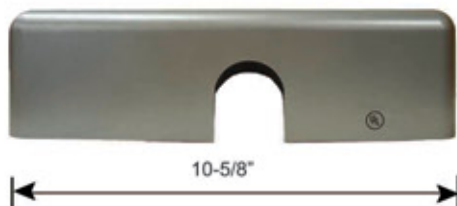
- Designed for low traffic application, interior interior or exterior
- Aluminum cast body, non-handed
- Precision rack and pinion construction
- Spring power size 3 (QDC53), and size 4 (QDC54)
- UL listed molded plastic full cover standard
- All-weather fluid, allowing door closer to perform in temperatures ranging from -31°F to 140°F
- Needle Bearing application for higher efficiency
- 1-13/32" (35.8mm) diameter piston
- 7/16" (11.2mm) diameter pinion
- 3" (76mm) projection (standard cover)
- Finish: Aluminum, Duro and 622: Flat Black Coated finishes. Other finishes upon request

Profile:

- Closer Body



- QPDC-SLM-SLIM Line Cover



- QDC53



- QDC54



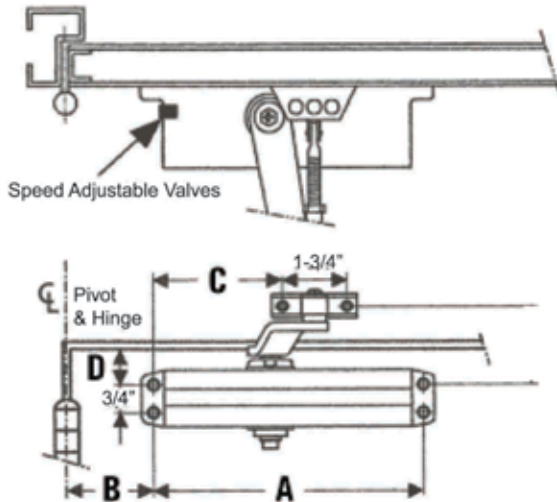


QDC53/54

GRADE 3 DOOR CLOSERS

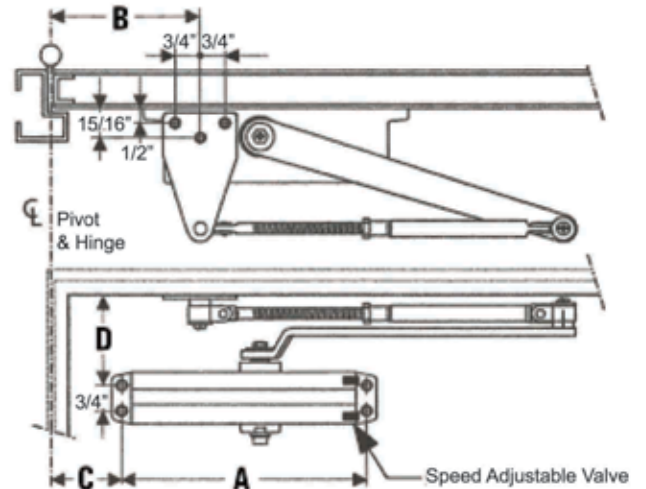
• Pull Side Installation

Model	A	B	C	D
QDC53	8-3/16"	4"	6-1/2"	1-1/8"
QDC54	9-1/16"	4"	6-1/2"	1-1/8"



• Push Side Installation

Model	A	B	C	D
QDC53	8-3/16"	8-3/4"	5-5/8"	3-3/8"
QDC54	9-1/16"	8-3/4"	4-3/4"	3-3/8"



Code Compliance

- ANSI: Comply with ANSI A156.4 Grade 3
- UL: UL and ULC listed



HOW TO ORDER

QDC53/54 Door Closer

Series	Finishes
QDC53: Size 3 door closer QDC54: Size 4 door closer	AL: Aluminum DU: Duro 622: Flat Black Coated

Order Sample

QDC53: Size 3 door closer _____ QDC53-AL

AL: Aluminum _____



ABOUT DOOR CLOSER

•Door Operation Frequency

	Application	Daily	Yearly
HIGH	Large Department Store Entrance	5,000	1,500,000
	Large Office Building Entrance	4,000	1,200,000
	Theater Entrance	1,000	450,000
	School Entrance	1,250	225,000
	School Restroom Door	1,250	225,000
	Store or Bank Entrance	500	150,000
	Office Building Restroom Door	400	118,000
AVERAGE	School Corridor Door	80	15,000
	Office Building Corridor Door	75	22,000
	Store Restroom Door	60	18,000
	Residential Entrance Door	40	15,000

•ANSI/BHMA A156.4 requirements on cycle test

- ANSI Grade 1 Door Closer: 2 million w/o BC, 1.5 million w/BC, Medium to High Traffic
- ANSI Grade 2 Door Closer: 1 million w/o BC, 750,000 w/BC, Low to Medium Traffic
- ANSI Grade 3 Door Closer: 500,000 w/ or w/o BC, Low Traffic

•Requirement of The Americans with Disabilities Act

Five pounds of opening force for interior doors. Labeled openings are exempt. Door closers installed in openings required to meet the requirements of The Americans with Disabilities Act of ANSI Standard A117.1, when adjusted to meet those requirements, may not provide adequate closing power to dependably close and latch the door.

•Closing (Sweep) Valves

Controls the sweep speed of the door from full open to approximately 10° open

TDC-40/70/85/90 offers adjustable closing speed. TDC-53/54 offers size 3 or size 4 spring power.

QDC40/70/85/90 offers adjustable closing speed. QDC53/54 offers size 3 or 4 spring power.

•Latch Valves

Controls speed of closing or latching of the door in the last 10° before the door hits the latch point.

•Backcheck Valves

Operates when the door is approximately 70° open, slows the momentum of the door when it has been pushed or pulled open. Crucial in areas with strong winds or on closers without deadstops. This function is not to be used as a door stop.

•Optional Delayed Action Valves

operates when the door is approximately 70° open and holds the door in that position for a preset time.

•Efficiency

Ten pounds of opening force will yield about six pounds of closing force. With ADA, five pounds of opening force yields approximately three pounds of closing force.





Marshall Best Security

10005 Cumberland Pointe Blvd. • Noblesville, Indiana 46060

317-806-1180 • F: 317-578-2901

www.MarshallBestSecurity.com