



Mortise

MORTISE LOCKS



RE Series

- Heavy duty mortise lock, wrought steel, corrosion resistant
 - UL listed 3-hour fire rating
 - Meet or exceed ANSI Grade 1 standards
 - Field reversible handing
 - Anti-saw deadbolts with hardened pins
 - One year manufacturer's warranty
- Easy installation and servicing
- Forged brass or stainless steel escutcheon
- 6 Solid-touch grip levers and 1 knob available
 - Levers made of forged brass or stainless steel
 - Grade 1 knob with steel insert
 - Available in 8 BHMA finishes - 605, 606, 612, 613, 625, 626, 629 and 630
 - Levers ADA compliant



RO Series



RS Series

Mortise Locks and Retrofit Trims Available



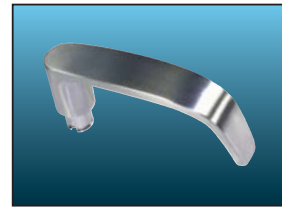
Artistic
605 - US3
Bright Brass



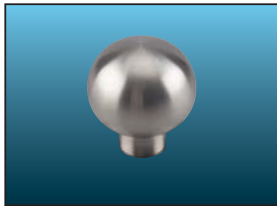
Congress
625 - US26
Bright Chrome



Gala
629 - US32
Bright Stainless



Imperial
630 - US32D
Satin Stainless



Regal
630 - US32D
Satin Stainless

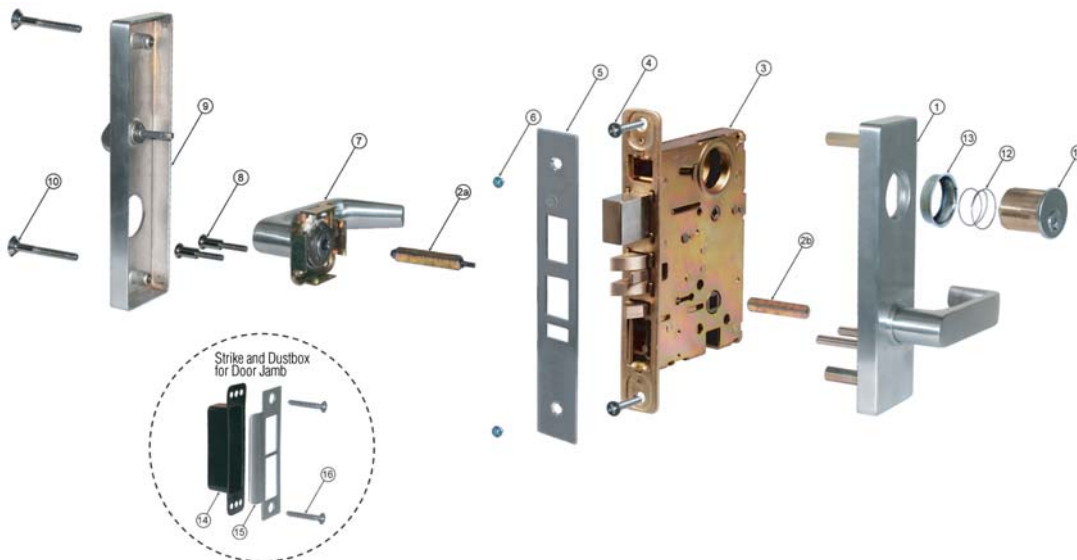


Sentinel
626 - US26D
Satin Chrome



Tango
606 - US4
Satin Brass

Typical Exploded View - RE & RCE Series



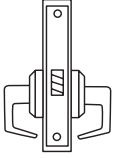
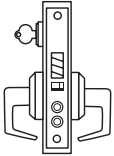
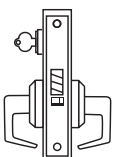
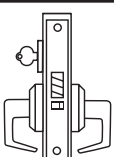
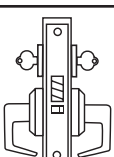
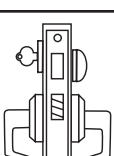
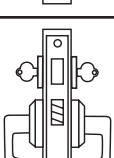
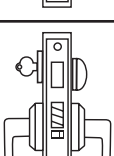
PARTS LIST DESCRIPTION

1. Outside Escutcheon Assembly (1)
See Note A
- 2a. Inside Spindle (1)
- 2b. Outside Spindle (1)
3. Mortise Lock Case (1)
4. Lock Case Screws (2)
5. Face Plate (1)
6. Face Plate Screws (2)
7. Inside Lever Assembly (1)
8. Assembly Mounting Screws (2)
9. Inside Escutcheon Assembly (1)
(Thumbturn Optional)
10. Escutcheon Mounting Screws (2)
11. Mortise Cylinder (1) *(Optional)*
12. Compression Spring (1) *(Optional)*
13. Cylinder Collar (1) *(Optional)*
14. Dustbox (1)
15. Strike (1)
16. Strike Screws (2)

Note A: The RCE Series has the clutching mechanism in the outside escutcheon assembly.



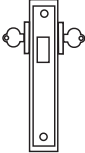
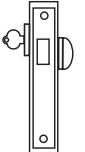
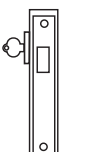
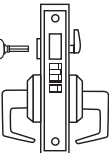
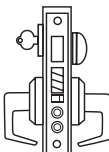
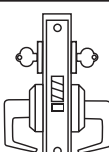
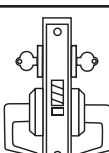
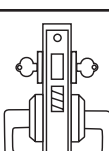
FUNCTIONS

	Series/ Function	Type	ANSI No.	Function Description
Specifications for R-Series <i>(References to levers also apply to knobs)</i>				
	RS-01 RE-01 RO-01	Passage or Closet	F01	Latch bolt operated by lever from either side at all times.
	RS-04 RE-04 RO-04 RC-04**	Entry	F04	Latch bolt operated by lever from either side except when outside lever is locked by push button in face plate. When outside lever is locked, latch bolt is retracted by key from outside or by operating inside lever. Auxiliary dead latch.
	RS-05 RE-05 RO-05 RC-05**	Classroom	F05	Latch bolt operated by lever from either side except when outside lever is locked from outside by key. When the outside lever is locked, latch bolt is retracted by operating inside lever or outside lever when unlocked by key.
	RS-07 RE-07 RO-07	Storeroom or Closet Lock	F07	Latch bolt operated by key from outside or by operating inside lever. Outside lever is always locked. Auxiliary dead latch.
	RS-09 RE-09 RO-09	Apartment, Exit or Public Toilet Lock	F09	Latch bolt operated by lever from either side, except when outside lever is locked by key from inside. When outside lever is locked, latch bolt is retracted by key from outside or by operating inside lever. Auxiliary dead latch.
	RS-13 RE-13 RO-13	Dormitory or Exit Lock	F13	Latch bolt operated by lever from either side. Dead bolt projected by key from outside and by turn knob from inside. Operating inside lever retracts both bolts and unlocks outside lever. Extended deadbolt automatically dead locks latch bolt.
	RS-14* RE-14* RO-14*	Store Door Lock	F14*	Latch bolt operated by lever from either side. Dead bolt operated by key from either side.
	RS-15 RE-15 RO-15 RC-15**	Hotel Guest Lock	F15	Latch bolt operated by key from outside or by operating inside lever. Outside lever is always locked. Dead bolt projected by turn knob from inside and all keys except emergency and display key are shut out. Operating inside lever retracts both bolts. Auxiliary dead latch.

* Attention: Locksets that secure both sides of the door are controlled by building codes and the Life Safety Codes. In an emergency situation, failure to quickly unlock the inside lever could be hazardous or even fatal.

** RC Series with Clutching Mechanism available in Entry, Classroom & Hotel functions only.

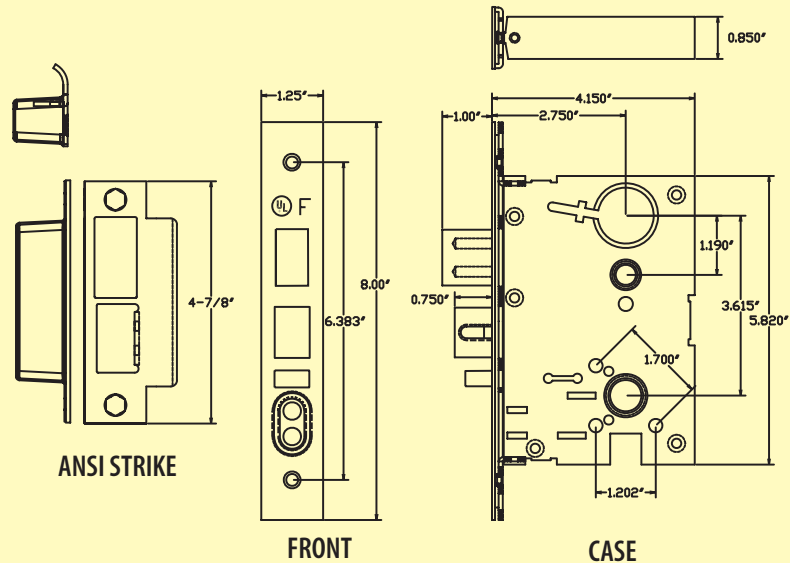
FUNCTIONS

	Series/ Function	Type	ANSI No.	Function Description
Specifications for R-Series <i>(References to levers also apply to knobs)</i>				
	RS-16* RE-16* RO-16*	Dead Lock	F16*	Dead bolt operated by key from either side.
	RS-17* RE-17* RO-17*	Dead Lock	F17*	Dead bolt operated by key from outside and by turn knob from inside.
	RS-18* RE-18* RO-18*	Dead Lock	F18*	Dead bolt operated by key from outside only.
	RS-19 RE-19 RO-19	Privacy, Bedroom or Bath Lock	F19	Latch bolt operated by lever from either side. Dead bolt operated by turn knob from inside and locks outside lever. Emergency release from outside. Operating inside lever retracts both bolts.
	RS-20 RE-20 RO-20	Apartment Corridor Door Lock	F20	Latch bolt operated by lever from either side, except when outside lever is locked by push button in face plate. Dead bolt operated by key outside or turn knob inside. Key outside operates both bolts. Operating inside lever retracts both bolts and outside remains locked. Latch bolt is deadlocked when outside lever is made inoperative or when the dead bolt is projected. When dead bolt is retracted, lever is unlocked by push button in face plate.
	RS-30* RE-30* RO-30*	Asylum or Institutional Lock	F30*	Latch bolt operated by key from either side. Both levers always locked. Auxiliary dead latch.
	RS-32 RE-32 RO-32	Intruder Latch Bolt Lock	F32	Latch bolt operated by lever from either side except when outside lever is locked from inside or outside by key. When outside lever is locked, latch bolt is retracted by key from outside or by operating inside lever. Auxiliary dead latch.
	RS-33 RE-33 RO-33	Intruder Dead Bolt Lock	F33	Latch bolt operated by lever from either side except when outside lever is locked from inside or outside by key. Dead bolt retracted by key from inside or outside. Operating inside lever retracts both bolts and unlocks outside lever.

* Attention: Locksets that secure both sides of the door are controlled by building codes and the Life Safety Codes. In an emergency situation, failure to quickly unlock the inside lever could be hazardous or even fatal.

Features And Specifications

For Doors	1 3/4" thick.
Backset	2 3/4".
Lockcase	Heavy gauge steel 8" x 1 1/4" x 3/32". Accommodates flat doors & doors beveled 1/8" in 2".
Armored Front	Wrought brass or stainless steel attached by machine screws to lockcase front.
Deadbolt	1" throw, brass, chrome plated with hardened steel rollers.
Latchbolt	Brass, chrome plated with Delrin anti-friction insert.
Guardbolt	Extruded brass, chrome plated.
Stopworks	Push button, brass, chrome plated.
Strike	Brass, bronze, or stainless steel, 4 7/8" x 1 1/4" Handed curved-up ANSI strike.
Hand	Handed. Reversible in field.
Trim	As specified.
Cylinder	As specified.
Keyway	As specified.
Finishes	As specified.
UL Listings	UL Listed "A" Label (3 hour), for use on fire doors: single or pairs.
ANSI	Meets dimensional and Grade 1 Operational and Grade 1 Security Specifications of ANSI A156.13-2005 Series 1000. Lock body conforms to Federal specification Type 86.



MORTISE LOCKS WITH CLUTCHING MECHANISM



RCE Series - Escutcheon Trim



RCS Series - Sectional Trim

- Free turning lever or knob in the locked position
- Vandal resistant clutching mechanism in outside trim assembly
- Ideally suited for hospitals, schools, universities, factories, offices and other areas requiring more security
- Top quality, added security
- Wrought rose or escutcheon made of brass or stainless steel
- Tamper-proof cylinder collars
- Available with interchangeable core and standard cylinder
- 6 Solid-touch grip levers and 1 knob available
 - Levers made of forged brass or stainless steel
 - Knob with steel insert
 - Available in 7 attractive BHMA finishes - 605, 606, 613, 625, 626, 629 and 630
 - Levers ADA compliant
- Heavy duty mortise lock
 - UL listed 3-hour fire rating
 - ANSI Grade 1
 - Heavy duty stopworks
 - Anti-saw deadbolts with hardened pins
- Entry, Classroom and Hotel functions available
- 3 year manufacturer's warranty

RETROFIT TRIMS FOR MORTISE LOCKS



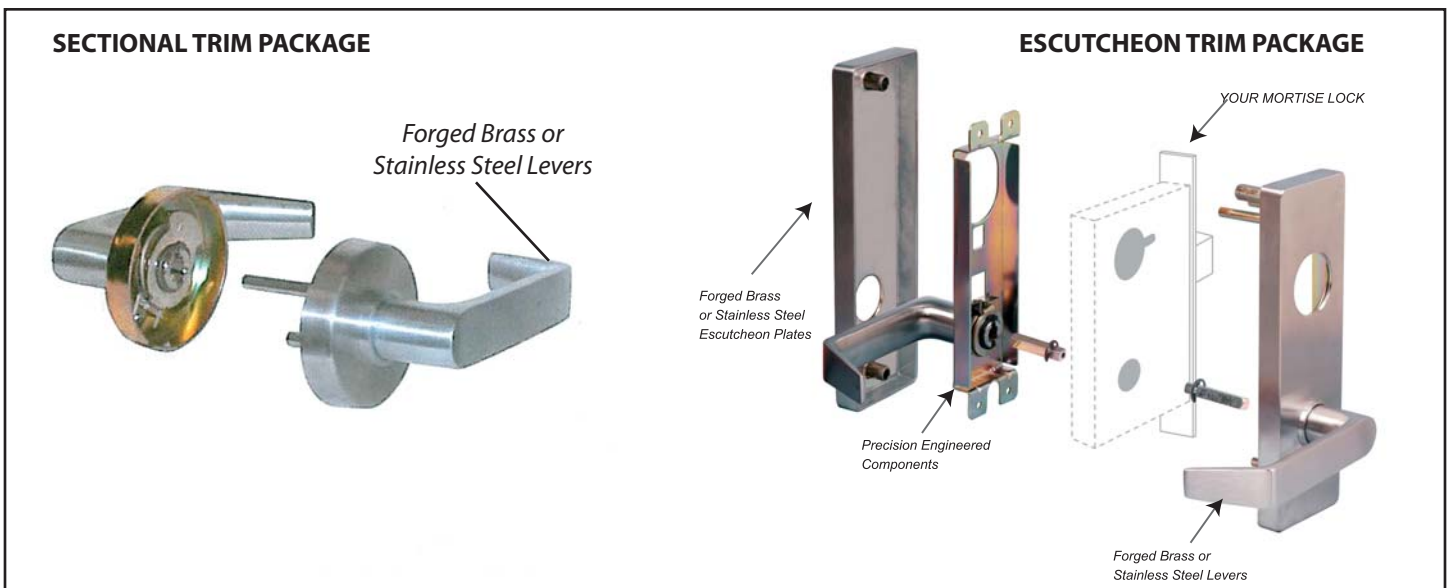
Escutcheon Trim

- Revitalize and renew all major brands
- Easy to install using existing mortise case
- Forged brass or stainless steel trim
- 6 solid touch grip levers and 1 knob available
- Available in 2 BHMA finishes - 626 and 630
- Designed to completely retrofit existing mortise lock trims without modifying the mortise case
- Levers ADA compliant
- Designed to conceal the original trim door preparation whether sectional or escutcheon trim

**ARROW • BEST • CORBIN • EMHART • FALCON
LOCKWOOD • MARKS • SARGENT • SCHLAGE • YALE**



Sectional Trim

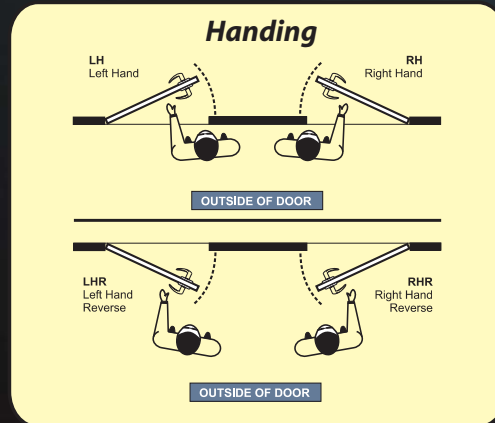


How to order: A complete lock survey is required to specify Retrofit Trims properly. Please contact your Marshall Best Security Representative for a free survey and price quote.

HOW TO ORDER — MORTISE LOCKS

Series	Function	Trim	Finish	Hand
RE	05	Sentinel	626	RH
RE - Regular Escutcheon	See Function Chart	Artistic Lever	605	RH - Right Hand
RO - Oval Escutcheon		Congress Lever	606	LH - Left Hand
RS - Rose		Gala Lever	612	RHR - Right Hand Reverse
RCE - Regular Escutcheon - Clutching Mechanism		Imperial Lever	613	LHR - Left Hand Reverse
RCS - Rose - Clutching Mechanism		Regal Knob	625	
		Sentinel Lever	626	
	Tango Lever	629		
			630	

Finishes — 605 - US3/Bright Brass
 606 - US4/Satin Brass
 612 - US10/Satin Bronze
 613 - US10B/Oil Rubbed Bronze
 625 - US26/Bright Chrome
 626 - US26D/Satin Chrome
 629 - US32/Bright Stainless
 630 - US32D/Satin Stainless



Marshall Best Security Corporation

www.marshallbestsecurity.com
 13907 Parkside Drive, Suite B
 Fishers, IN 46038
 317-806-1180