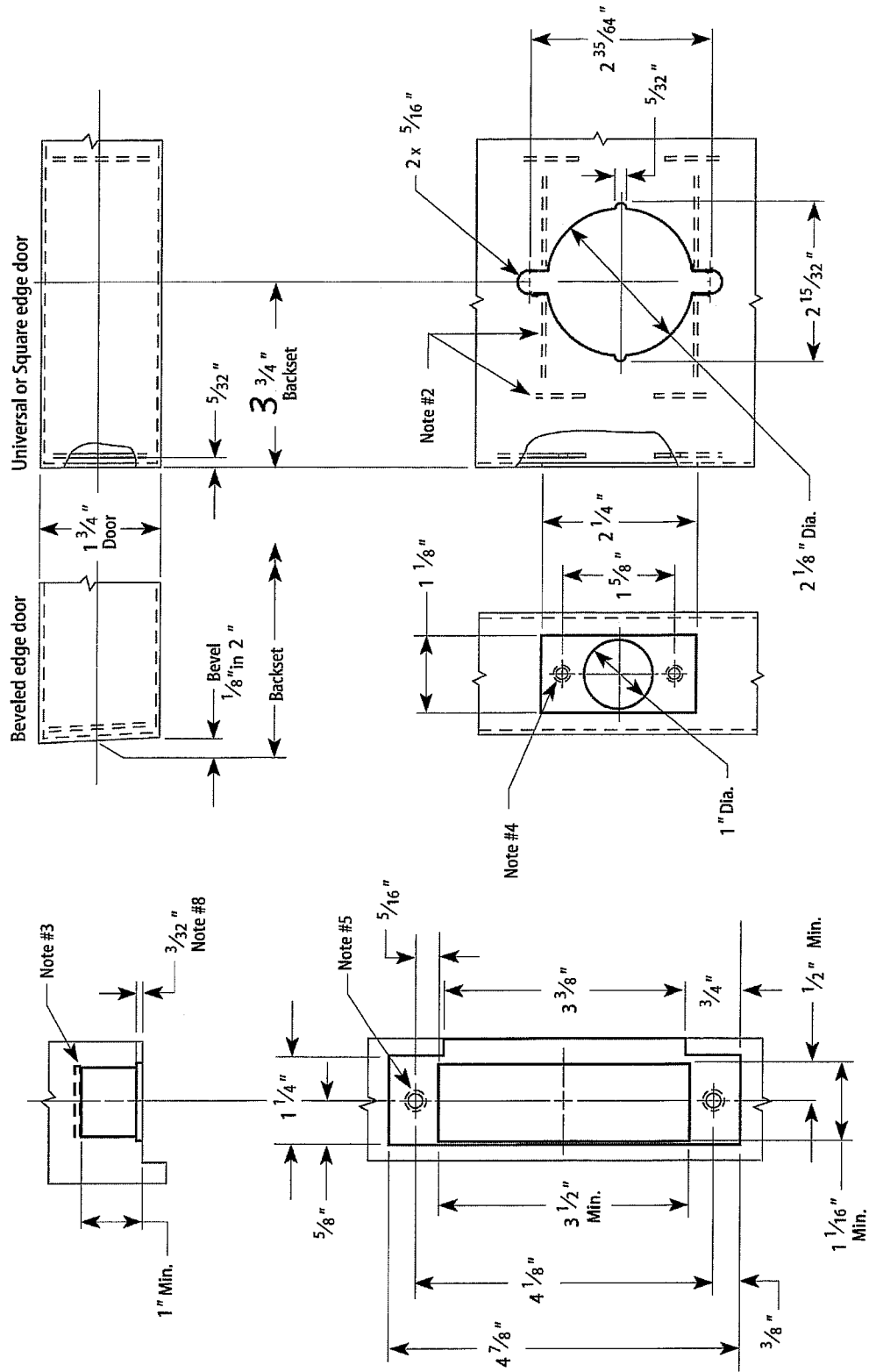


Notes

- 1 Allow plus tolerance for clearance per ANSI A115.2.
- 2 Lock and latch case support by door manufacturer.
- 3 Plaster guard by door manufacturer
- 4 Prepare for a #8-32 screw.
- 5 Prepare for a #12-24 screw.
- 8 When a strike box is used, 9/64".



**Door and Frame Preparation for MB1 and MB2 Cylindrical Locks
3 -3/4" Backset, Large ANSI Strike (S1), 1-3/4" Door Thickness**



Marshall Best Security Corporation

Frame Preparation

3 3/4" Backset Door Preparation